



REQUEST FOR QUALIFICATIONS (RFQ) #111-21

# SPECIAL PROJECT INSPECTION SERVICES

May 19, 2021

SUBMITTED BY:

**ATLAS**

Stephanie Slonaker | Sr. Business Development Manager  
14457 Meridian Parkway  
Riverside, CA 92518  
909.730.4750

[stephanie.slonaker@oneatlas.com](mailto:stephanie.slonaker@oneatlas.com)



May 19, 2021

**NEWPORT-MESA UNIFIED SCHOOL DISTRICT**

ATTN: JONATHAN GEISZLER  
DIRECTOR OF PURCHASING & WAREHOUSE, PURCHASING DEPARTMENT  
2985 BEAR ST., BUILDING A  
COSTA MESA, CA 92626

**RE: PROPOSAL FOR SPECIAL PROJECT INSPECTION SERVICES**

Atlas Proposal #10-59190PW

Dear Geiszler,

**Atlas Technical Consultants LLC (Atlas)** is pleased to present our proposal for Special Project Inspection Services to Newport-Mesa USD. Atlas is a professional services firm with a nationwide footprint that provides geotechnical engineering, construction material testing, special inspections, infrastructure design and modeling services, environmental compliance and permitting; as well as, program, project, and construction management services.

Previously known as **United-Heider Inspection Group (UHIG)** for over 36 years; we were purchased by Atlas in 2018 and just recently merged brands. Company-wide, Atlas employs **more than 3,200 staff**, including many California licensed **professional engineers, geotechnical engineers, geologists, multi-certified inspectors**, program, project, and construction managers, and support personnel. Our local project management office is located in Irvine, California, with our state-of-the-art DSA Certified Laboratory located in Riverside, California (DSA LEA No. 53). Atlas is also registered with the California Department of Industrial Relations (DIR No. 1000595408). Atlas is prepared and equipped to provide full services to the District in an expeditious and timely manner and on relatively short notice so as to enable the District to meet critical deadlines and schedules.

Our **experience working on projects for local K-12** and Community College Districts under the jurisdiction of **DSA runs deep**. We have provided our services on **hundreds of similar DSA projects** for Districts such as Irvine USD, Tustin USD, Capistrano USD, Los Angeles USD, Montebello USD, Rowland USD, and El Segundo USD.

Atlas is committed to **"Building Relationships."** Our company's qualifications can be judged in part by our history, our technical capabilities, our impressive list of repeat clients, and our commitment of doing quality work at a fair market price. Atlas complies with this agreement, including provided appropriate wage rates and accounting for rate increases throughout the duration of the project. Our strong commitment to our clients has been the driving force behind our success. We are proud to extend this commitment to you in support of the District's projects.

The **main point of contact** for the District in regards to this RFP and any resulting contract will be **Ms. Stephanie Slonaker**, Senior Business Development Manager. She can be reached at **(909) 730-4750**, or via email at: **stephanie.slonaker@oneatlas.com**. Thank you for the opportunity and we look forward to working with Newport-Mesa Unified School District. Atlas confirms that **there are no known conflict of interest involving** any District employee, consultant or member of the Board of Education.

Very Respectfully,

**ATLAS TECHNICAL CONSULTANTS LLC**

Stephanie Slonaker

Sr Business Development Manager  
Stephanie.slonaker@oneatlas.com

Bridget Sherman

Operations Manager  
Bridget.Sherman@oneatlas.com

**CONTACT INFORMATION  
FOR THE FIRM:**

14457 Meridian Parkway  
Riverside, CA 92518

**p.** (951) 697-4777

**f.** (951) 653-1144

**DIR.** 1000595408

**www.oneatlas.com**





## #13

ENR Top 100

## 3,200+

professional  
staff  
nationwide

## 140+

offices



states

approx.

## \$500

million  
in revenue

### Who We Are

As a world-class organization dedicated to creating lasting infrastructure with more than 3,200 people in more than 140+ offices, **Atlas Technical Consultants, LLC** is uniquely connected to the communities we serve. Our legacy companies (Consolidated Engineering Laboratories, United-Heider Inspection Group, SCST, LLC, ATC Services) have over 100 years of collective experience, based on our core values of mastery, trust, compassion and respect. All while providing a safe and sustainable infrastructure for our team members and clients.

### Services

Our services have grown to include everything from materials testing, construction quality assurance, inspection, management, design, and land acquisition services. We see beyond the project and focus on what is most important—improving the lives of the people in the communities in which we live and work.

### Why Atlas?

Atlas is unique in the fact that our combined legacy companies are regarded locally as industry leaders in the materials testing and inspection field, especially on projects involving public school construction. Coupled with the backing of a strong nationwide network of highly regarded professionals and a comprehensive offering of value - added services, Atlas offers the District the knowledge, experience and stability that can't be found anywhere else in our industry. In a nutshell, the advantages of using Atlas on your project include:

- State-of-the-Art local DSA certified laboratories;
- Industry leading experience in DSA projects; including full campus builds;
- Large pool of qualified inspectors and technicians;
- Project Management that is experienced in working with several local School Districts;
- DSA compliance procedures and knowledge of DSA Box;
- Proven experience managing budgets and delivering testing and inspection scopes under budget.

### COMPANY INFORMATION

**Legal Business:** Atlas Technical Consulting LLC

**Type of Legal Entity:** Limited Liability Corporation - Partnership

**Entity Number:** 201730010320

Number of Years in Business as Atlas, 1 yrs, as United Heider (Related Prior Business Name) 36 yrs

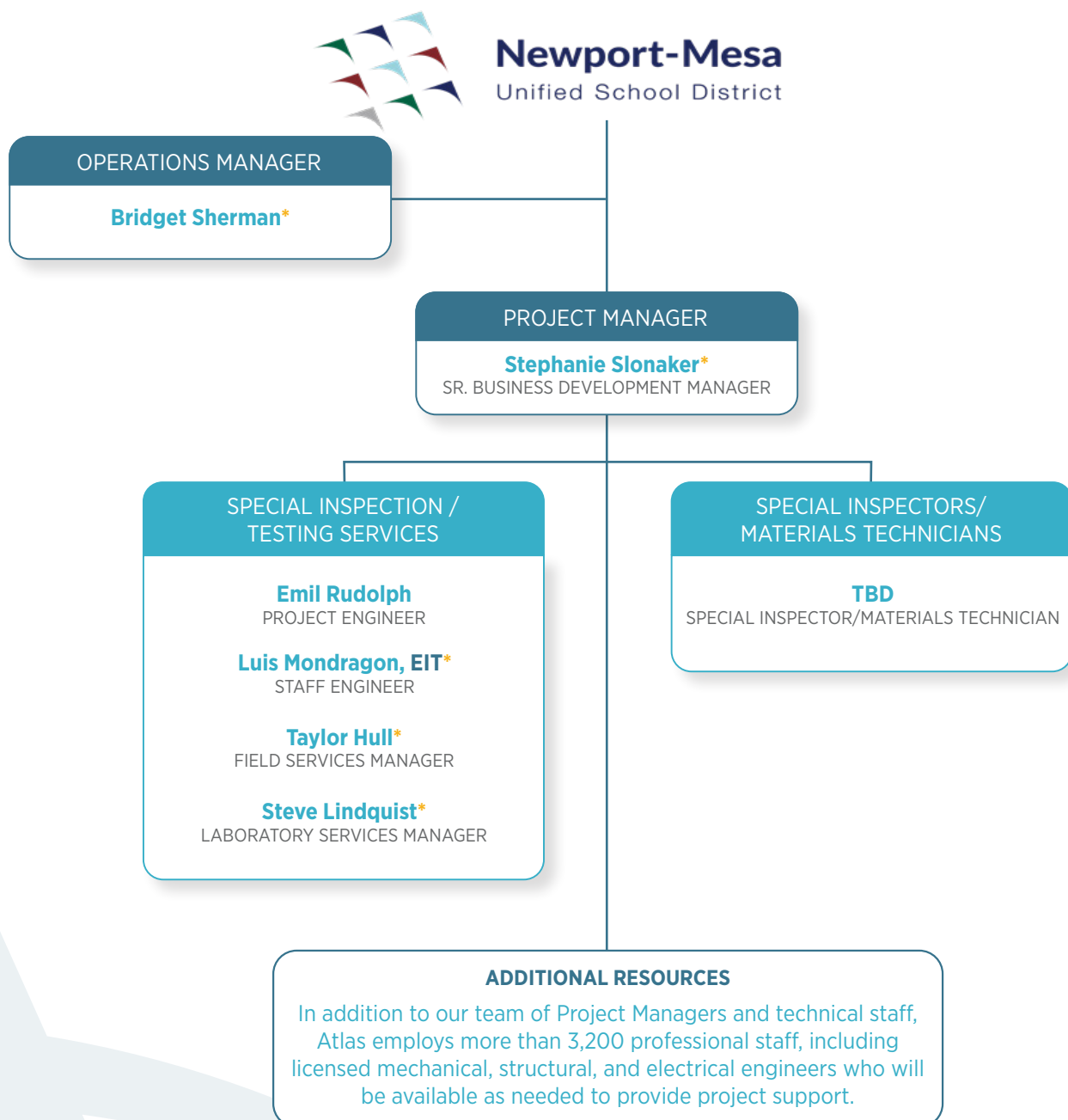
Atlas does not have commitments or potential commitments that may impact the ability to perform the contract, if awarded.

## Current Workload and Availability

Atlas is a leading provider of materials testing and special inspection services, as well as geotechnical engineering services. Our current workload comprises materials testing and special inspection services for private and public clients throughout Southern California.

Our current workload varies from month to month. We currently have an approximate workload of **450+ man hours per day** and are capable of providing upwards of **800+ man hours per day**. We maintain a workforce and laboratory staff capable of exceeding the current workload.

As a national firm, Atlas has the ability to increase our technical and support staff as contract and project workloads dictate. This enables us to take on additional assignments without impacting our present portfolio of clients and projects. Based on our experience, we have a full understanding of the requirements and level of support expected during this project and will meet the various challenges with an extraordinary team of professionals.



# BRIDGET SHERMAN

## OPERATIONS MANAGER

### OFFICE LOCATION

Riverside, CA

### EDUCATION

BS, Management & Finance, California State University, San Bernardino

### AFFILIATIONS

Coalition for Adequate School Housing (CASH)

Community College Facility Coalition (CCFC)

California Society for Healthcare Engineering (CSHE)

### EXPERIENCE

15 YEARS

## EXPERIENCE & RESPONSIBILITIES

Ms. Sherman has worked in Project Management and Project Development in the Testing and Inspection Industry for nearly 15 years, with an emphasis on working directly with K-12, Community College, and University in the Education Sector. Ms. Sherman is in charge of assembling the project team made up of Atlas's staff who are most qualified to meet the project requirements, then keeping the team informed of all pertinent issues during the duration of the project.

## PROJECT EXPERIENCE

- ▶ UCLA: Engineering VI Phase I and Phase II
- ▶ UCLA: Football Performance Center
- ▶ Rowland Unified School District: Nogales HS Revival; HVAC Upgrades at Various Sites
- ▶ Downey Unified School District; Downey, CA: Stauffer Middle School Modernization, Warren High
- ▶ School Athletic Field Bleachers; Old River Elementary School Marquee
- ▶ Los Angeles Community College District; Various Locations, CA: LA City College - New Student Services Building
- ▶ South Orange County Community College District; Irvine Valley College Monuments Replacement, Irvine, CA
- ▶ Capistrano Unified School District Esencia K-8 New Construction, San Juan Capistrano, CA
- ▶ Long Beach Unified School District - Jordan High School Renovation and New Construction
- ▶ Downey Unified School District - Stauffer Middle School Renovation and New Construction, Downey, CA
- ▶ El Segundo Unified School District - Various Projects, El Segundo, CA
- ▶ San Marino Unified School District - Huntington Middle School Gym and Athletic Facility New Construction
- ▶ Newport Mesa Unified School District - Corona Del Mar High School New Gym/Weight Room, Corona Del Mar, CA
- ▶ Rancho Santiago Community College District - New Central Plant and Infrastructure at Santa Ana College, Santa Ana, CA
- ▶ Rancho Santiago Community College District - Russell Hall Replacement at Santa Ana College Geotechnical Investigation, Santa Ana, CA
- ▶ North Orange County Community College District, Various Projects
- ▶ Anaheim Union High School District - Anaheim High School Aquatics Facility Geotechnical Investigation, Anaheim, CA

# STEPHANIE SLONAKER

## PROJECT MANAGER

### OFFICE LOCATION

Riverside, CA

### AFFILIATIONS

Coalition for Adequate School Housing (CASH)

Community College Facility Coalition (CCFC)

California Society for Healthcare Engineering (CSHE)

### EXPERIENCE

10 years

## EXPERIENCE & RESPONSIBILITIES

Mrs. Slonaker has worked in Project Management and Project Development in the Testing and Inspection Industry for nearly 10 years, with an emphasis on working directly with K-12 Clients in the Education Sector. She keeps abreast of all important issues effecting projects that fall under the Jurisdiction of DSA. As the Director of Project Development, she is in charge of securing projects that align with Atlas's core strengths; then managing the project's cost controls, conducting thorough evaluations of budgets, and managing all other aspects of the project. Mrs. Slonaker is in charge of assembling the project team made up of Atlas's staff who are most qualified to meet the project requirements, then keeping the team informed of all pertinent issues during the duration of the project. In addition, she upholds extraordinary client satisfaction for many of Atlas's high-profile projects by proactively managing client requests and needs, organizing the necessary staff to address challenges and by addressing any client concerns. Mrs. Slonaker also makes frequent project site visits and facilitates team meetings when needed.

## PROJECT EXPERIENCE

- ▶ Rancho Santiago Community College District: Various Projects
- ▶ Rowland Unified School District: Nogales HS Revival; HVAC Upgrades at Various Sites
- ▶ Downey Unified School District; Downey, CA: Various projects
- ▶ Los Angeles Community College District; Various Locations, CA: LA City College - New Student Services Building
- ▶ South Orange County Community College District; Irvine Valley College Monuments Replacement, Irvine, CA
- ▶ Long Beach Unified School District - Jordan High School Renovation and New Construction
- ▶ El Segundo Unified School District - Various Projects; El Segundo, CA
- ▶ San Marino Unified School District - Huntington Middle School Gym and Athletic Facility New Construction
- ▶ Newport Mesa Unified School District - Corona Del Mar High School New Gym/Weight Room - Corona Del Mar, CA
- ▶ North Orange County Community College District - Various Projects
- ▶ Anaheim Union High School District - Anaheim High School Aquatics Facility Geotechnical Investigation - Anaheim, CA
- ▶ San Bernardino City Unified School District; San Bernardino, CA: Various Sites

## MEHRAB JESMANI, PE, PHD

### PROJECT ENGINEER

#### OFFICE LOCATION

Irvine, CA

#### EDUCATION

PhD, Geotechnical Engineering, Sharif University of Technology, Tehran, IRAN and Rutgers, The State of New Jersey

MS, Civil Engineering, Shiraz University

BS, Civil Engineering, Tehran University

#### REGISTRATION

Civil Engineer  
PE CA #81452

#### AFFILIATIONS

International Society of Soil Mechanics and Geotechnical Engineers

#### EXPERIENCE

20 Years

### EXPERIENCE & RESPONSIBILITIES

Dr. Jesmani has over 20 years of geotechnical calculation, investigations, materials testing, inspection, writing and review of soil and foundation reports. He has over 17 years of geotechnical engineering and materials testing experience and has provided geotechnical calculation, material testing and inspection services for major projects such as large dams engineering, soil improvement, slope stability high-rise buildings, street improvements, highways, airports, railroads, oil and gas line installations industrial factories and development projects. Designer, project manager and consultant in ten projects of embankment and concrete dams.

Dr. Jesmani is an expert in the following Geotechnical Engineering Fields: Liquefaction, landslides, mud and debris flows, Analysis of slope stability, shallow and deep foundation, micropiles, nailing and retaining wall, Excavation support systems and mining, Earthquake/Seismic response and risk related evaluation. Expansive and collapsible soils and soil modification, Levees/dams analysis, assessment and safety, seepage, computer problem solving and field investigations, development of successful client relations, quality control and quality assurance, computer modeling, graphing and imaging software.

### PROJECT EXPERIENCE

- ▶ Jordan High School Buildings Construction, Long Beach, CA
- ▶ Glendale Community College, Gymnasium and Science Buildings, Glendale, CA
- ▶ Grace Yokley Middle School, Solar Panel Units, Ontario, CA
- ▶ Walnut Elementary School, Parking Lot Improvement, La Habra, CA
- ▶ Wilson High School, Track and Field Improvement, Long Beach, CA
- ▶ Casimir Middle School, Gymnasium Project, Torrance, CA
- ▶ Greystone Firehouse Restroom, Beverly Hills, CA
- ▶ Lambert Road Rehabilitation Phase II, Brea, CA
- ▶ World On Its Hind Legs Art Piece Burton Way Median, Beverly Hills, CA
- ▶ Orange County Sanitation District FE12-02 P1 Hazardous Waste Storage Relocation, Fountain Valley, CA
- ▶ City of Beverly Hills Police Station Facility, Beverly Hills, CA
- ▶ Del Amo Extension T-30 Phase 2, Torrance, CA
- ▶ Butterfield Park Lighting Soils Investigation, Corona, CA

# LUIS MONDRAGON, EIT

STAFF ENGINEER

## OFFICE LOCATION

Riverside, CA

## EDUCATION

BS, Civil Engineering,  
California State  
Polytechnic University

## CERTIFICATIONS

ACI Grade I #01372048

FACE F-Number  
Measurement

GSSI Structural Scan

Nuclear Gauge Safety

## EXPERIENCE

7 YEARS

## EXPERIENCE & RESPONSIBILITIES

Mr. Mondragon is a dedicated Engineer in Training (E.I.T.) with over seven years of experience in the construction industry. His responsibilities include reviewing and maintaining field soils reports and other submittals for conformance with project requirements. He is also certified as an ACI Concrete Field Testing Technician, Floor Flatness Technician and Ground Penetrating Radar Technician by GSSI. He will also assist with project closeout and can produce certification reports, such as Final Grading Reports. He is experienced in all aspects of field and laboratory testing of soils, steel and concrete materials. He is highly motivated to learn and grow in the industry with a professional presentation. His experience has developed strong skills in working proactively on any project. His communication skills, diligence and dedication to his profession make him a great addition to any project team.

## PROJECT EXPERIENCE

- ▶ Rowland Unified School District HVAC Upgrades at Various Sites
- ▶ Irvine Unified School District - Portola Elementary School, Irvine, CA
- ▶ Rancho Cucamonga Middle School Infiltration Investigation, Rancho Cucamonga, CA
- ▶ Los Angeles Unified School District Projects, Various Locations, CA
  - > San Pedro High School Buildings 1, 3, and 6, San Pedro, CA
  - > Bravo Medical Magnet General Site Improvement, Los Angeles, CA
  - > Abram Friedman Occupational Center HVAC Replacement, Los Angeles, CA
  - > Lorena Elementary School GPR, Los Angeles, CA
- ▶ Hook Junior High School New Facilities, Victorville, CA
- ▶ University of California, Los Angeles, Engineering VI Phase I and Phase II
- ▶ University of California, Los Angeles, UCLA Football Performance Center - Wasserman Football Center
- ▶ University of La Verne, The Ludwig Center, Redlands, CA
- ▶ California State University, San Bernardino, San Bernardino, CA
  - > Utility Infrastructure Upgrade Project
  - > Central Plant Addition
  - > Electrical Substation
  - > College of Extended Learning
- ▶ Loma Linda University Shyrock Hall Basement, Loma Linda, CA
- ▶ Riverside Community Hospital Increment 1, Riverside, CA
- ▶ Reda-Newport Heights Medical Campus MOB 1 and 2, Newport Beach, CA



# TAYLOR HULL

## FIELD SERVICES MANAGER

### OFFICE LOCATION

Riverside, CA

### CERTIFICATIONS

DSA Certifications:  
Masonry #5322

Authorized Climber/  
Rescuer #16327-  
92608-1

ICC Certifications  
#5264191:

Soils  
Reinforced Concrete  
Structural Masonry  
Structural Welding  
Structural Steel &  
Bolting  
Master of Special  
Inspection Spray  
Applied Fire Proofing  
Prestressed Concrete  
Prestressed Concrete  
Codes  
Prestressed Concrete  
Plans

### EXPERIENCE

15 YEARS

### EXPERIENCE & RESPONSIBILITIES

Proficient with laboratory and field-testing of construction materials and methods for commercial buildings, Taylor Hull has over 15 years of experience as a Special Inspector and Field Service Management in the construction inspection industry. He is knowledgeable in computer applications such as Microsoft Word and Excel. Trained in performance of Quality Control in Construction Materials Testing Laboratory; including critiquing test procedures, reviewing collected data and verifying computations. Experienced at in-place density testing of soil utilizing sand cone and nuclear gauge test methods. Performed field-testing of concrete placement, including slump, temperature, air content, and molding compressive strength specimens. Inspection of concrete placement, including reinforcing steel placement inspection, concrete placement and consolidation inspection. Masonry inspection, including CMU placement, reinforcing steel placement, grouting of CMU walls. Taylor is knowledgeable of all relevant standard compliance and code requirements. He brings excellent documentation skills, along with an aptitude for identifying construction difficulties early on and resolving those issues expeditiously. His experience has allowed him to develop strong skills in working proactively on any project. His communication skills, diligence and dedication to his profession make him a great addition to any project team.

### PROJECT EXPERIENCE

- ▶ DGS Strawberry Peak; San Bernardino, CA
- ▶ DGS South Operations Headquarters Relocation; Riverside, CA
- ▶ DGS Riverside Campus California School for the Deaf; Riverside, CA
- ▶ DGS Construct New Main Kitchen – Patton State Hospital; Patton, CA
- ▶ OCPW CUP Infrastructure Upgrades; Santa Ana, CA s; Various Locations
- ▶ Long Beach Unified School District - Jordan High School Renovation and New Construction
- ▶ City of Fontana – Banana Avenue Storm Drain and Sewer Improvements; Fontana, CA
- ▶ City of Corona –Home Gardens County Water District Well Collection; Corona, CA
- ▶ Feron Rancho Cucamonga Buildings 1 and 2; Rancho Cucamonga, CA
- ▶ Los Angeles Community College District – LAVC Valley Academic and Cultural Center; Valley Glen, CA
  - > Phase 8 – Eisenhower High School; Rialto, CA
  - > Phase 1 – Kordyak Elementary School; Rialto, CA
  - > Phase 2 – Rialto High School; Rialto, CA
  - > Phase 2 – William G. Jehue Middle School; Colton, CADGS South Operations Headquarters Relocation; Riverside, CA
- ▶ Las Encinas Psychiatric Hospital; Pasadena, CA
- ▶ Good Samaritan Hospital Emergency at Moonlight Molds; Gardena, CA

# STEVE LINDQUIST

## LABORATORY SERVICES MANAGER

### OFFICE LOCATION

Riverside, CA

### AFFILIATIONS

ACI Certifications:  
Concrete Laboratory  
Testing Technical  
Grade 1, Concrete  
Field Testing  
Technician Grade 1

Fyfe Fiber Reinforces  
Polymer (FRP)  
Certified

Nuclear Gauge Safety

Dipstick Floor Profiler  
Certified I

ATI - 103 RSO Portable  
Density/Moisture  
Gauge

GSSI StructureScan  
Optical

ClickSafety:  
CAL OSHA 10  
Construction  
#13411832,  
Haskell Safety  
Orientation Serial  
#14922240,  
ETA Think 12 and  
Come Home  
Safe Program 1  
#18090213  
ETS Think 12 and  
Come Home  
Safe Program 2  
#19192876,  
C2 Accident  
Prevention Heavy  
Construction  
#18090214,  
C2 Stairways  
and Ladders R2  
#18090215,  
C2 Ergonomics  
#19192877,  
C1 Cal Personal  
Protective Equipment  
Awareness #19192878

### EXPERIENCE

20 YEARS

### EXPERIENCE & RESPONSIBILITIES

Mr. Lindquist has over 20 years of experience as Laboratory Services Manager and Senior Field Technician. He has overseen the laboratory materials testing for all projects on which our firm has provided services. He is an experienced Field Technician, familiar with code requirements as they pertain to testing and inspection in the laboratory and in the field. He is trained and certified by Fyfe in the inspection of Fiber Reinforced Polymer (Fiber Wrap) placement. He is also capable of performing asphalt and concrete batch plant inspection and is an experienced Caltrans Materials Tester. His laboratory responsibilities include logging of samples, soil testing including sieve and proctor testing, soil consolidation testing, field density testing, concrete cylinder fabrication and testing, asphalt concrete testing. He is responsible for laboratory certifications such as OSHPD, AASHTO, City of Los Angeles, AMRL, City of San Diego and the California Division of the State Architect (DSA). He is also capable of performing required testing of typical construction materials such as concrete, masonry, structural steel, reinforcing steel, and fireproofing.

### PROJECT EXPERIENCE

- ▶ University of California, Los Angeles: Engineering VI Phase 1 and Phase 2; UCLA Football Performance Center - Wasserman Football Center
- ▶ University of La Verne: The Ludwig Center
- ▶ California State University, San Bernardino; San Bernardino, CA: College of Extended Learning
- ▶ Rowland Unified School District; HVAC Upgrades; Various Locations
- ▶ San Bernardino City Unified School District - Multiple District Wide Projects
- ▶ Irvine Unified School District Portola Elementary School Projects; Irvine, CA
- ▶ Los Angeles Unified School District Various Projects; Los Angeles, CA
- ▶ Morongo Unified School District - Various Projects
- ▶ Cucamonga School District - Various School Projects
- ▶ City of Riverside EDD; Riverside, CA
- ▶ City of Brea, Street Improvements, Cinnamon Street, Brea, CA
- ▶ City of Santa Ana On-Call Projects; Santa Ana, CA: Pico Lowell Street; Lyons Street Rehab; Bristol Street Widening; McCarrthy Blvd. Bike Trail; McFadden Rehab; Civic Center Rehab
- ▶ City of Fontana Geotechnical Material Testing; Fontana, CA: Cherry Avenue at Victoria Street Traffic Signal and Street Improvement; Cypress Street Improvements
- ▶ City of Whittier Replacement of the Guardrail and Handrail; Whittier, CA
- ▶ City of Moreno Valley - Street Improvements and Ironwood Avenue Improvements from Heacock Street to Perris Boulevard; Moreno Valley, CA
- ▶ DGS MT0113 Riverside Campus Project - California School for the Deaf; Riverside, CA
- ▶ DGS MT0413 On-Call Service Area IV; Various Location, CA

## LOS ANGELES UNIFIED SCHOOL DISTRICT : SOUTH REGION HS #8 NEW CONSTRUCTION

LOCATION: MAYWOOD, CA



The Los Angeles Unified School District (LAUSD) South Region High School #8 project included the design of a new high school occupying two city blocks on 9.24 acres. The south side of the campus prominently showcases a classroom building containing three Small Learning Communities (SLCs), each with its own dedicated quad.

The first floor includes administrative offices, indoor dining space, an outdoor lunch shelter, and classroom space. The second and third floors house 10 general classrooms, a flexible science lab and a chemistry lab. The south side of the campus also includes a library, a multi-purpose building, gym and a service yard.

The north side of campus includes a parking structure with 120 stalls on the ground level. The structure's rooftop features five full-size basketball courts and two large stairs that double as bleachers. A soccer and football stadium, jogging track, and instructional garden round out the remaining space on the north side of campus. Fifty percent of the classroom building and gymnasium roofs, as well as a portion of the parking structure, are designed for a future installation of photovoltaic arrays to power school facilities. The project's total building area is 203,035 sq. ft. with a total building footprint of 114,534 sq. ft.

The project relieved the district's issue with overcrowding at local schools and allowed the area's current high school to return to a two-semester calendar for the first time in more than 30 years. In addition, the project also serves the neighboring community as a recreational and social space, as they have secure access to the multi-purpose room, library, gym and athletic fields after-hours.

### OWNER REFERENCE

#### Los Angeles Unified School District

Peyman Soroosh Moghadam, P.E., S.E.

Los Angeles Unified School District

333 S. Beaudry Avenue

Los Angeles, California 90017

### PROJECT DETAILS

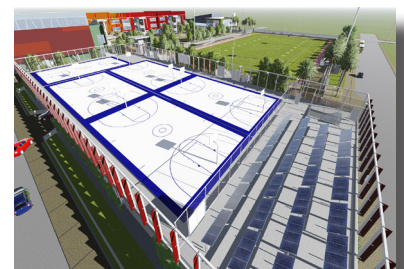
**Size:** 203,035 sq. ft

**Start Date:** 2013

**Completion Date:** 2018

**Construction Value:** \$75 Mill

**Testing & Inspection Cost:** \$1.9 Million





## COLFAX CHARTER ELEMENTARY SCHOOL : CLASSROOM ADDITION

LOCATION: NORTH HOLLYWOOD, CA



Atlas provided materials testing and field investigation services on this renovation project for the Colfax Charter Elementary School renovation. The facility upgrades for the LAUSD's Colfax Charter Elementary School (the "school" or "Colfax") campus include the construction of 18 new classrooms, removal of ten portable classrooms situated in five buildings, interior modifications to administrative spaces, an expanded lunch shelter and arcade, relocation of the school's main entry from Addison Street to Colfax Avenue, and realignment of the existing surface parking lot. The project would increase student capacity at Colfax by up to 160 new students, allowing the school to accommodate current and anticipated resident enrollment. The need for the project is to provide Colfax with facilities that are safe, secure and aligned with the school's instruction program, as well as provide for improved campus circulation and on-site parking for faculty, staff and visitors.

### OWNER REFERENCE

**Los Angeles Unified School District**  
Peyman Soroosh Moghadam, P.E., S.E.  
Los Angeles Unified School District  
333 S. Beaudry Avenue  
Los Angeles, California 90017

### PROJECT DETAILS

**Size:** 39,460 sf  
**Start Date:** 2017  
**Completion Date:** 2/21 (exp)  
**Contract Value:** \$14.2 million  
**Total Billed:** \$294,072





## DANBROOK ELEMENTARY SCHOOL: ADMINISTRATION BUILDING MODIFICATIONS

ANAHEIM, CALIFORNIA



The project consists of improvements to administration building 1, including restrooms, replacement of doors and hardware, architectural finishes, replacement of ceilings, lights HVAC, water, sewer, electrical power, data, and complete fire alarm; plus expansion of the north parking lot.

United-Heider provided Concrete Inspection and sampling (including Batch Plant Operations), Masonry Inspection and testing, Drilled-in-Anchor Inspection, Certified Welding Inspection/Observation (Shop and Field), and soils testing and observation .

### OWNER REFERENCE

**Client:** Centralia School District

Jim Evans, MOT Director

p. (714) 228-3100

### PROJECT DETAILS

**Start Date:** 12/2018

**Completion Date:** 09/2019

**Construction Cost:** \$2 M

**Construction Contract:** \$22,000

**Services:** Materials Testing & Inspection

## IRVINE UNIFIED SCHOOL DISTRICT: HERITAGE FIELDS K-8 NO. 2

IRVINE, CALIFORNIA



Construction of a new K-8 school including 3 kindergarten classrooms with shared flex space, 3 dedicated music rooms, food service with covered outdoor court, media center and reading room, 3 dedicated grade level wings each having separate indoor and outdoor learning spaces, 21 standard classrooms, 3 upper grade science rooms, a fitness room, innovation and design labs as well as space for counseling and life learning skills.

### OWNER REFERENCE

**Client:** Irvine Unified School District

Joe Chapin, Director, Construction Services

JoeChapin@iusd.org

p. (949) 936-5361

### PROJECT DETAILS

**Start Date:** 05/2017

**Completion Date:** 08/2018

**Construction Cost:** \$47.2 M

**Construction Contract:** \$300,000

**Services:** Materials Testing & Inspection

## OSWALT ACADEMY NEW CAMPUS PROJECT

ROWLAND HEIGHTS, CALIFORNIA



**Client:** Rowland Unified School District

Marcos Rodriguez, Director, Construction

[marcosr@rowlandschools.org](mailto:marcosr@rowlandschools.org)

p. (626) 712-5796

**Start Date:** 05/2020

**Completion Date:** Current

**Construction Cost:** \$53 M (estimated)

**Atlas Contract:** \$900,000

**Services:** Materials Testing & Inspection

The project consists of the new construction of five metal-framed buildings, each with a complex exterior façade. The buildings include several new classroom wings as well as administrative and multi-purpose buildings. Atlas is serving as the Laboratory of Record during construction, providing all inspections and materials testing.

## SOUTH REGION HIGH SCHOOL NO. 8

MAYWOOD, CALIFORNIA

**Client:** Los Angeles Unified School District

Richard Nguyen, Owner's Authorized Representative

[richard.c.nguyen@lausd.net](mailto:richard.c.nguyen@lausd.net)

p. (213) 241-4652

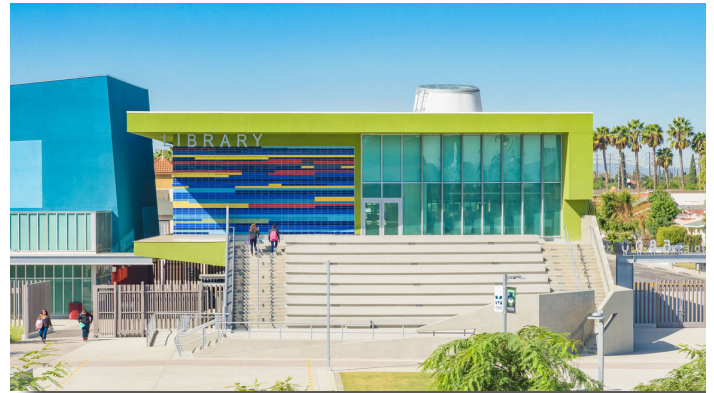
**Start Date:** 03/2015

**Completion Date:** 05/2018

**Construction Cost:** \$76 Million

**Atlas Contract:** \$1.9 Million

**Services:** Materials Testing & Inspection



The scope for this project was the master plan and design of a new high school occupying two city blocks on 8.41 acres. The south side of the campus prominently showcases a 93,150 SF Classroom Building containing three SLCs; each with its own dedicated quad. Administrative offices, indoor dining and an outdoor lunch shelter, a set-aside classroom and a flexible classroom occupy the first floor of each 24,000 SF SLC. The second and third floors house 10 general classrooms, a flexible science lab, and a chemistry lab. Completing the south campus are the school's 15,100 SF library, 12,600 SF multi-purpose building, 36,000 SF gym, and a service yard. The north side of campus includes a 42,380 SF parking structure with 120 stalls on the ground level. The structure's rooftop features five full size basketball courts and two large stairs that double as bleachers. A soccer/football stadium, jogging track, and instructional garden round out the remaining space on the north side of campus. Fifty percent of the classroom building and gymnasium roofs, as well as a portion of the parking structure, are designed for a future installation of photovoltaic arrays to power school facilities. The project's total building area is 200,500 SF with a total building footprint of 110,300 SF.

## SAN MARINO ELEMENTARY SCHOOL ADMINISTRATION OFFICE & INNOVATION LAB

BUENA PARK, CALIFORNIA



**Client:** Centralia School District, c/o SchoolHaus Advisors, Inc.

Cindy Leighton, Project Manager

Email: cindy@schoolhausinc.com

p. (714) 532-1352

**Start Date:** 09/2019

**Completion Date:** 04/2020

**Construction Cost:** \$2,161,513.33

**Atlas Contract:** \$23,956.40

**Services:** Materials Testing & Inspection

The project consists of improvements to administration building 8, expansion of the north parking lot, and minor improvements to building 7. Atlas, via our legacy company United-Heider Inspection Group, provided Concrete Inspection and sampling (including Batch Plant Operations), Masonry Inspection and testing, Drilled-in-Anchor Inspection, Certified Welding Inspection/Observation (Shop and Field), and soils testing and observation.

## NEWHART MIDDLE SCHOOL STEAM BUILDING

MISSION VIEJO, CALIFORNIA

**Client:** Capistrano Unified School District  
- c/o TELACU Construction Management

Daniel Clem

dclem@telacu.com

p. (714) 541-2390 ext. 308

**Start Date:** 03/2020

**Completion Date:** Current

**Construction Cost:** \$10.5 M (estimated)

**Atlas Contract:** \$82,076.00

**Services:** Materials Testing & Inspection



Materials Testing & Inspection during the new construction of a two-story classroom building and associated site work.



# PROJECT AND COST MANAGEMENT



## Methodology

### DOCUMENT REVIEW

Our technical approach includes the assurance of construction compliance with the approved plans and specifications. Prior to the start of the project, the Project Manager and the Lead Inspector will meet with the IOR, Design Team, and Contractor to discuss the plan and its implementation. Among the objectives of the meeting will be the identification of the communications and data channels between the Atlas Project Management Team, the District, the IOR, the Architect, the Engineer, and the Contractor's personnel. An additional goal of this meeting will be to develop a mutual understanding of activities and responsibilities of the Atlas Team on the project.

In summary, it is our experience that **COOPERATION** and **COMMUNICATION**, at all levels, is the key to a successful project.

### CONSTRUCTION MATERIALS INSPECTION AND TESTING

Atlas has the required experience and certifications to perform the scope of inspections and materials testing in its entirety.

## REINFORCED CONCRETE

### Mix Design Review

We will review the proposed concrete mixes in our laboratory for conformance with the specifications.

### Reinforcing Steel Placement

Prior to the pours, our inspector will inspect the reinforcing steel placement to determine that it is according to plans and specifications. Our inspector will check:

- Size and spacing of bars;
- Location and length of splices;
- Clearances;
- Cleanliness of bars;
- Spacing tolerances;
- Proper support of steel with ties.

### Concrete Placement and Sampling

During the pours, our inspector will be on-site continuously, as required by Code, to monitor the placement. Our inspector will:

- Determine that no bars are displaced during pouring;
- Observe cleanliness of steel;
- Determine adequacy of placement and vibratory equipment;

# PROJECT AND COST MANAGEMENT

- Determine proper delivery rate of concrete and monitor batch times;
- Determine the correct mix is being utilized;
- Monitor slump of each truck;
- Record temperature of air and concrete;
- Cast 4 (4x8) cylinders for compression tests per 50 cubic yards;
- Perform air checks, if required by specifications, during concrete placement;
- Observe anchor bolt/dowel installation operations to determine hole depth, embedment and cleanliness, as well as materials and workmanship. We will inspect to determine all dowels are installed in accordance with contract documents and/or manufacturer's requirements.

## Concrete Compression Testing

We will transport all samples to our laboratory for compression testing in strict accordance with the American Society for Testing and Materials (ASTM) requirements. Compression test reports will be distributed to the appropriate parties.

## POST-INSTALLED ANCHORS

As required, we will perform visual examination of anchor placement to determine if post-installed anchor holes are clean, of the proper depth and diameter, and installed as specified by the manufacturer. In addition, we will perform proofload/torque testing of the anchors at the percentage defined by the plans and specifications.

NOTE: These estimates assume that adequate access will be provided for performing the work at maximum production, i.e., scaffolding. Should any anchor fail, additional tests will be required per plans.

## LABORATORY SERVICES DURING CONSTRUCTION

Atlas will perform all testing in conjunction with the field testing and observation in accordance with plans, specs, and DSA requirements to evaluate that all construction materials comply with the project requirements and are suitable for their intended use.

Our laboratories are considered state-of-the-art construction materials testing facilities and are fully accredited by several oversight agencies:

- Division of the State Architect (LEA No. 53)
- City of Los Angeles (TA10158)
- AASHTO
- Army Corps of Engineers
- CCRL
- OSHPD No. OPAA-0037-16

## REPORTS

Atlas will submit all required reports, including the Final Verified Reports needed to certify the project with DSA.

## PROJECT MANAGEMENT DURING CONSTRUCTION

Atlas' Lead Inspector and/or Project Manager will conduct all walk-throughs with the IOR when they visit the project site. All activities are documented and submitted to the IOR on a daily basis.

# SUB CONSULTANTS

**ATLAS TECHNICAL CONSULTANTS** do not anticipate utilizing any resources from Sub Consultants at this time.

## CLIENT REFERENCES

### UNIVERSITY OF CALIFORNIA, LOS ANGELES

- > Mr. William Chung  
T. 310.267.4018
- > Mr. Mark A. Voltz  
T. 310.794.4168

### LOS ANGELES COMMUNITY COLLEGE DISTRICT, LOS ANGELES

- > Mr. Eugene Santos, OAR  
T. 714.869.8132

### IRVINE UNIFIED SCHOOL DISTRICT, IRVINE

- > Mr. Joe Chapin  
T. 949.936.5361
- > Mr. Kelvin Okino  
T. 949.936.5305

### LOS ANGELES UNIFIED SCHOOL DISTRICT, LOS ANGELES

- > Mr. Richard Nguyen, OAR  
T. 213.200.7002

“

**“I want to stress that this was the labor of many, many, many people,” said Karmanova in thanking Lisa McBride and the many on-campus departments and groups including her staff who worked on the project.”**

”

– Tiana Karamanova  
Dean of the College of Extended  
& Global Education

## CLIENT TESTIMONIALS

“It is with great pleasure to provide a letter of reference for United Inspection and Testing, Inc. They have been on our campus continually for nearly eight years. They provided the inspection on our Student Housing in 2001 and 2002, they provided an onsite inspector of record and specialty inspections as needed. Their performance was exemplary. Since the mentioned project was completed they have been assigned numerous other contracts with the University as well as with our satellite campus in Palm Desert. Their scope of work consisted of onsite inspections of reinforced concrete, structural steel, fireproofing, masonry and any other task deemed necessary to inspect. We employed United Inspection inspectors on three of the latest jobs as inspectors of records. The inspectors are involved in all issues that are brought up during construction. When special inspections were required such as welding or fireproofing, United supplied the personnel on short notice. The inspectors from United gained the respect from all categories of personnel on campus. They were always informative and willing to go the extra mile. When work was required to be performed at an unusual time, United was always accommodating. The inspectors have kept the contractors in line in regards to as-builts and code issues. The inspectors written reports were legible submitted in a timely manner and told the story of the progress of the project It is with pleasure that I recommend United Inspection and Testing, Inc. to anyone who wants to get a quality project completed in a timely manner.” – Hamid Azhand at California State University, San Bernardino

“United has worked with DWR on several projects over the years and I find the United team is very responsive to the needs of our projects. The inspectors and technicians are knowledgeable, experienced, and properly equipped to provide the necessary services. The office support staff is friendly and attentive to our reporting needs. I would recommend United to any public or private entity in need of your services.” – Charlie Butler at Department of Water – Sacramento Project Headquarters

“Overall the firm was very responsive to the needs of the City and now that the construction of the First Street Bridge project comes to a successful close, it is appropriate to take the opportunity to thank the United Inspection & Testing Team. I have found their services and responsiveness to be of the highest quality and would absolutely recommend them to other public clients.” – Edward Torres at City of Santa Ana Public Works Agency

“

**“I would like to take this opportunity to express our sincere thanks for the services provided for the Cinnamon Tract Street Rehabilitation and Water Line Project. Your firm’s dedicated employees were punctual, dependable and reliable.”**

”

– Raul Lising, PE  
City of Brea, Public Works Dept.



**ATLAS TECHNICAL CONSULTANTS** has reviewed the below questions, and provided our response:

- Is there now pending any legal action against the firm or any employee of the firm alleging violations of the law in connection with an offering of municipal securities in a California transaction? If so, please describe such pending action.

At this time, Atlas does not have any pending legal action against the firm or any employee of the firm alleging violations of the law in connection with an offering of municipal securities in a California transaction.

- Have there been any settlements or judgments involving such actions within the last five (5) years? If so, describe each such settlement or judgment, including the nature of the action and the amount of recovery.

There have not been any settlements or judgments involving such action within the last five (5) years.

- Please list and describe any judgment, settlement, or arbitration award valued at \$5,000 or greater relating to a civil action judgment, settlement, arbitration award, or administrative action for any individual licensee, as required to be reported to the State of California.

There are no judgments, or settlements or arbitration for Atlas at this time.

## ATTACHMENT G


## FIRM PROPOSAL / OFFER FORM

This Proposal/Offer Form must be duly executed and submitted with any proposal/offer to NMUSD.

The Offeror hereby agrees that its proposal/offer is subject to all RFQ # 111-21 provisions, terms and conditions, attachments, exhibits, amendments and other applicable materials which are attached or incorporated by reference. Offeror hereby agrees to promptly enter into an agreement in substantial accordance with such RFQ provisions, terms and conditions, and secure a performance bond within five (5) days of the Districts intent to award the contract.

The Offeror hereby agrees that its attached proposal/offer of which this is part, is a firm and irrevocable offer and valid for acceptance by NMUSD for the period sixty (60) days after closing. The Offeror hereby agrees that if its proposal/offer is accepted by NMUSD that it shall provide all of the services in accordance with the RFQ, as it may be amended.

Name of Person Duly Authorized to Execute this Proposal/Offer: Bridget Sherman

Duly Authorized Signature: 

Title: Operations Manager

Date of this Proposal/Offer: May 18th, 2021

Offeror Name: Atlas Technical Consultants, LLC

Offeror Address: 14457 Meridian Parkway,

Riverside, CA 92518

Offeror Telephone: 951-697-4777

Offeror Email: bridget.sherman@oneatlas.com / stephanie.slouaker@oneatlas.com

## ATTACHMENT H

NEWPORT MESA UNIFIED  
SCHOOL DISTRICT  
2985 Bear St., Bldg. A  
Costa Mesa, California 92626  
(714) 424-5063

**DSA Inspection Services**  
**RFQ: # 124-21**

**NONCOLLUSION**  
**DECLARATION**  
**Public Contract Code § 7106**

TO BE EXECUTED BY SUBMITTER AND SUBMITTED WITH RFQ

The undersigned declares:

I am the Operations Manager **[PRINT YOUR TITLE]**

of Atlas Technical Consultants, LLC **[PRINT FIRM NAME]**.

The party making the foregoing Contract.

The RFQ is not made in the interest of, or on behalf of, any undisclosed person, partnership, company, association, organization, or corporation. The RFQ is genuine and not collusive or sham. The submitter has not directly or indirectly induced or solicited any other submitter to put in a false or sham RFQ. The submitter has not directly or indirectly colluded, conspired, connived, or agreed with any submitter or anyone else to put in a sham RFQ, or to refrain from submitting. The submitter has not in any manner, directly or indirectly, sought by agreement, communication, or conference with anyone to fix the RFQ price of the submitter or any other submitter, or to fix any overhead, profit, or cost element of the RFQ price, or of that of any other submitter. All statements contained in the RFQ are true. The submitter has not, directly or indirectly, submitted his or her RFQ price or any breakdown thereof, or the contents thereof, or divulged information or data relative thereto, to any corporation, partnership, company, association, organization, RFQ depository, or to any member or agent thereof, to effectuate a collusive or sham RFQ, and has not paid, and will not pay, any person or entity for such purpose.


Any person executing this declaration on behalf of a submitter that is a corporation, partnership, joint venture, limited liability company, limited liability partnership, or any other entity, hereby represents that he or she has full power to execute, and does execute, this declaration on behalf of the submitter.

I declare under penalty of perjury under the laws of the State of California that the foregoing is true and correct and that this declaration is executed on the following date:

Date: May 18th, 2021

Proper Name of Submitter: Atlas Techncial Consultants LLC

City, State: Riverside, California,

Signature: 

Print Name: Bridget Sherman

Title: Operations Manager



# HOURLY FEE SCHEDULE



## Master Fee Schedule - Newport Mesa

### Prevailing Wage

## GEOTECHNICAL, CONSTRUCTION INSPECTION AND MATERIALS TESTING SERVICES

The following unit rates have been developed to encompass all vehicle and equipment charges.

### PERSONNEL RATES

#### Professional and Project Management

Staff Type	Unit Rate	Unit
Geotechnical Engineer	\$ 170.00	Hour
Principal Engineer/Geologist	\$ 150.00	Hour
Senior Engineer	\$ 120.00	Hour
Project Engineer	\$ 115.00	Hour
Staff Engineer	\$ 100.00	Hour
Project Manager	\$ 90.00	Hour
Field Supervisor	\$ 90.00	Hour

#### Inspectors and Technicians

Staff Type	Rate	Cost
Multidisciplinary Lead Inspector	\$ 92.00	Hour
Assistant Inspector	\$ 92.00	Hour
Soils Engineering Technician	\$ 98.00	Hour
Post-Tensioned Concrete Inspector	\$ 92.00	Hour
Certified Welding Inspector	\$ 92.00	Hour
ICC Certified Inspector	\$ 92.00	Hour
Proof Load Testing	\$ 135.00	Hour
Floor Flatness Technician	\$ 165.00	Hour
Ground Penetrating Radar	Quote Upon Request	
One Man Crew	\$ 175.00	Hour
Two Man Crew	\$ 225.00	Hour
Non-Destructive Testing (ASNT)		
Level III Review	\$ 115.00	Hour
Magnetic Particle Testing Level II	\$ 105.00	Hour
Ultrasonic Testing Level II	\$ 105.00	Hour
Dye Penetrant Level II	\$ 105.00	Hour
Radiographic Inspection	Quote Upon Request	
Coring		
Coring Machine Operator	\$ 110.00	Hour
Helper (Add Per Hour)	\$ 95.00	Hour
Wood Fabrication Inspection	\$ 98.00	Hour
Nailing Inspection	\$ 95.00	Hour
Roofing Inspection	\$ 95.00	Hour
Laboratory Technician	\$ 85.00	Hour

### LABORATORY TESTS

#### Soils and Asphalt

Description	Unit Rate	Unit
Asphalt Content by Ignition	\$ 165.00	Each
Burn-Off Method CT 382/ASTM D6307	\$ 300.00	Each
Bitumen Content (extraction), ASTM D2172	\$ 200.00	Each
Bitumen Content CT 310/Cal 382 Ignition Furnace	\$ 150.00	Each
Gradation of Extracted Sample, ASTM C 136/CT 202	\$ 120.00	Each
Maximum Theoretical Specific Gravity ASTM D2041	\$ 160.00	Each
Swell of Bituminous Mixtures, CT 304/305	\$ 210.00	Each
Collapse/Swell ASTM D4546	\$ 100.00	Each
Compaction, Modified Proctor ASTM D1557	\$ 150.00	Each
Compaction, Modified Proctor ASTM D698	\$ 150.00	Each
Compressive Strength, Asphalt Plant Mix ASTM D1074	\$ 250.00	Each
Consolidation ASTM D2435, D4546	\$ 200.00	Each
Corrosivity D4972, G57, D4327, D46589M	Quote Upon Request	
Direct Shear, Consolidated-Drained ASTM D3080	\$ 600.00	Each
Direct Shear, Residual ASTM D6467 Mod	\$ 550.00	Each
Direct Shear, Unconsolidated-Undrained ASTM D3080	\$ 350.00	Each
Direct Shear, Add'l Consolidated-Drained ASTM D3080	\$ 175.00	Each
Direct Shear, Add'l Consolidated-Undrained ASTM D3080	\$ 125.00	Each
Direct Shear, Residual Each Additional Cycle ASTM D6467	\$ 175.00	Each
Expansion Index Test UBC 29-2/ASTM D4829	\$ 120.00	Each
Lab Resistivity	\$ 95.00	Each
Liquid Limit, Plastic Limit and P.I. ASTM D4318	\$ 160.00	Each
Particle Size Analysis of Soil #4 to Fines ASTM D422	\$ 270.00	Each
Particle Size Analysis of Soil 3" to Fines ASTM D422	\$ 170.00	Each
Percent Finer than #200 Sieve ASTM D1140	\$ 50.00	Each
Permeability of Granular Soils ASTM D2434	\$ 265.00	Each
Permeability, Flexible Wall, Cohesive Soil ASTM D5084	\$ 425.00	Each
pH ASTM D4972	\$ 25.00	Each
"R" Value ASTM D2844/CT 301	\$ 250.00	Each

#### Soils and Asphalt Continued

Description	Unit Rate	Unit
Resistivity of Soil ASTM G57	\$ 133.00	Each
Sand Equivalent ASTM D2419/CT 217	\$ 120.00	Each
Sieve Analysis of Extracted Aggregate ASTM D5444	\$ 55.00	Each
Sieve Analysis, 3" to #200 Gradation ASTM C117	\$ 120.00	Each
Sieve Analysis Minus #200 by Wash ASTM D1140/C117	\$ 65.00	Each
Soil Classification, ASTM D 2487	\$ 280.00	Each
Soil Moisture/Density In Situ Sample ASTM D1587/D2937	\$ 50.00	Each
Thickness/Height Compact Asphalt Mix ASTM D3549	\$ 30.00	Each
Water Soluble Sulfate	\$ 70.00	Each

#### Concrete and Aggregate Tests

Description	Unit Rate	Unit
Specific Gravity & Absorption Coarse Agg. ASTM C127	\$ 85.00	Each
Specific Gravity & Absorption Fine Agg. ASTM C128	\$ 85.00	Each
Trial Batches ASTM C192	\$ 800.00	Each
Durability Index Coarse & Fine Aggregate ASTM D3744	\$ 120.00	Each
Lightweight Concrete Unit Weight ASTM C495	\$ 35.00	Each
Modulus of Elasticity of Concrete ASTM C469	\$ 190.00	Each
Sieve Analysis, Coarse Aggregate ASTM C136/CT 202	\$ 100.00	Each
Sieve Analysis, Fine Agg #4 to #200 ASTM C117/C136	\$ 100.00	Each
Specific Gravity & Absorption Coarse Agg. ASTM C127	\$ 85.00	Each
Specific Gravity & Absorption Fine Agg. ASTM C128	\$ 85.00	Each
Splitting Tensile/Concrete Cylinder ASTM C496	\$ 35.00	Each
L.A. Rattler, ASTM C131 or C535/Cal 211	\$ 300.00	Each
Sulfate Soundness (per sieve), ASTM C88	\$ 140.00	Each
Unit Weight of Aggregates, ASTM C29	\$ 120.00	Each
Hardness, ASTM D1865	\$ 160.00	Each
Crushed Particles, CT 205	\$ 160.00	Each
Cleanliness Value, CT 227	\$ 120.00	Each
Moisture Content of Aggregate ASTM C29	\$ 70.00	Each
Value, Extraction Gradation, Weight, Avg. of 2 Biscuits	\$ 799.00	Each
Concrete		
Shrinkage, set of 3, ASTM C157, CT 530	\$ 370.00	Each
Compression 4x8 Cylinders ASTM C39	\$ 22.00	Each
Compression, 6x12 Cylinders, ASTM C39	\$ 30.00	Each
Compression, 3X6 Cylinders Lightweight ASTM C495	\$ 35.00	Each
Compression, 2X2 Cubes, each age, ASTM C109	\$ 35.00	Each
Concrete Core Compression ASTM C42	\$ 75.00	Each
Splitting Tensile, 6X12 Cylinders, ASTM C496	\$ 75.00	Each
Unit Weight of Concrete Cylinders, ASTM C567	\$ 45.00	Each
Unit Weight of Lightweight ASTM C495	\$ 55.00	Each
Shotcrete Pre-Production Panel Test, Up to 12" Thick	\$ 1,000.00	Each
Shotcrete Pre-Production Panel Test, 12" to 24" Thick	\$ 1,400.00	Each
Flexural Strength of Concrete, ASTM C78 or C495	\$ 180.00	Each
Shotcrete Panel Core Compression Test, ASTM C42	\$ 100.00	Each
Emission of Moisture through Concrete	\$ 100.00	Each

#### Coring Services

Description	Unit Rate	Unit
Diamond Drill Bit Charges, per inch to 5"	\$ 8.00	Inch
Diamond Drill Bit Charges, per inch 6" and over	Quote Upon Request	
Compression of Core ASTM C42	\$ 100.00	Each

#### GFRC Panel Tests

Description	Unit Rate	Unit
Flexural Testing, per P.C.I. Recommended Practice	\$ 71.00	Each
Pullout Testing of Anchors, per P.C.I. Recommended	\$ 116.00	Each
Fiberwrap Testing ASTM D3039	\$ 650.00	Each

#### Masonry Tests

Description	Unit Rate	Unit
Brick Absorption ASTM C67	\$ 20.00	Each
Brick Compression ASTM C67	\$ 40.00	Each
Masonry Core Compression CCR Title 24	\$ 45.00	Each
Dimensional Measurement-Masonry Units ASTM C140	\$ 75.00	Each
Masonry Unit Compression Gross Area ASTM C140	\$ 110.00	Each

# HOURLY FEE SCHEDULE



## Master Fee Schedule - Newport Mesa Prevailing Wage

### GEOTECHNICAL, CONSTRUCTION INSPECTION AND MATERIALS TESTING SERVICES

The following unit rates have been developed to encompass all vehicle and equipment charges.

#### Masonry Tests Continued

Description	Unit Rate	Unit
Compression, Grout Prisms, ASTM C39	\$ 21.00	Each
Compression, Mortar Cylinders, ASTM C39	\$ 21.00	Each
Compression, Composite Prisms, ASTM E447	\$ 95.00	Each
Compression, Masonry Core, ASTM C140	\$ 75.00	Each
Shear, Masonry Core, CCR Title 24	\$ 100.00	Each
Epoxy Grout 2x2x2 Cube Compression ASTM C579	\$ 35.00	Each
Masonry Composite Prism Compression ASTM C1314	\$ 160.00	Each
Grout Prism - Compression Test ASTM C1019	\$ 35.00	Each
Masonry Unit Compression Net Area ASTM C140	\$ 85.00	Each
Absorption & Moisture of Block ASTM C140	\$ 120.00	Each

#### Reinforcing Steel Tests

Description	Unit Rate	Unit
Bend Test of Rebar #11 ASTM A370	\$ 100.00	Each
Bend Test of Rebar #14 ASTM A370	\$ 170.00	Each
Bend Test of Rebar #3 - #10 ASTM A370	\$ 40.00	Each
Tensile #11 Rebar ASTM A370	\$ 100.00	Each
Tensile #14 Rebar ASTM A370	\$ 170.00	Each
Tensile Test #3 - #10 ASTM A370	\$ 60.00	Each

#### Prestressing Steel Tests

Description	Unit Rate	Unit
Seven Wire Strand Modulus of Elasticity Uncoated ASTM	\$ 325.00	Each
Seven Wire Strand Vinyl Coating Removal ASTM A370	\$ 300.00	Each
Uncoated 7 Wire Strand, 1/4" to 1/2"		
Yield Strength, Breaking Strength, Elongation (add \$ 25.00 per test; for Modulus of Elasticity)	\$ 300.00	Each
Breaking Strength Only	\$ 195.00	Each

#### Structural Steel Tests

Description	Unit Rate	Unit
Hardness Test, Brinell ASTM E10	\$ 30.00	Each
High Strength Bolts/Nuts/Washer Compliance Test ASTM	\$ 185.00	Each
Mild Steel Not Over 1" Thick		
Tensile Strength, ASTM A370 (test only)		
Samples, Under 1-1/2 square inch in cross section	\$ 100.00	Each
Samples, 1-1/2 square inch and over in cross section	\$ 175.00	Each
Chemical Analysis	\$ 110.00	Each
Bending	\$ 85.00	Each
Anchor Bolts, A 505	\$ 175.00	Each
Tensile Strength	\$ 200.00	Each
Bolts Proof Load or Ultimate	\$ 110.00	Each
Nuts Proof Load	\$ 60.00	Each
Washers Proof Load	\$ 30.00	Each
Hardness (Rockwell)	\$ 30.00	Each
Weldment Testing (Mild Steel Not Over 1" Thick)		
Transverse Tensile	\$ 120.00	Each
Transverse Side Bend	\$ 80.00	Each
Transverse Root and Face Bend	\$ 80.00	Each
Macroetch	\$ 80.00	Each
0.505" Tensile Specimen	\$ 125.00	Each
Charpy V-Notch Specimen	Quote Upon Request	

#### Fireproofing Tests

Description	Unit Rate	Unit
Fireproofing Adhesion / Cohesion Test Kit ASTM E736	\$ 45.00	Each
Fireproofing Density Test ASTM E605	\$ 35.00	Each

#### Miscellaneous

Description	Unit Rate	Unit
Concrete Mix Design Review	\$ 90.00	Each
Preparation of WPS, PQR, or Welder Certificate	\$ 125.00	Each
Welder Qualifications	\$ 150.00	Each
Weld Procedure Review	\$ 200.00	Each
QA/QC Plan Written Procedures	Quote Upon Request	
Sample Pick-Up	\$ 35.00	Trip
Project Labor Compliance	\$ 75.00	Hour

#### BASIS OF CHARGES

Description	Unit Rate	Unit
Work from 0-4 hours	4-Hour Minimum Billing	
Work from 4-8 hours	8-Hour Minimum Billing	
Work over 8 hours per day, or on Saturdays	Time and One-Half	
Work over 12 hours per day	Double Time	
Work on Sundays/Holidays	Double Time	
Show-Up Time	2-Hour Minimum Billing	
Shift Differential	\$ 10.00	Hour
Laboratory Testing - Rush Fee	Add 50% to Testing Cost	
Outside Services/Reimbursables	Cost + 15%	
Shipping Charges	Cost + 15%	
Parking/Tolls	At Cost	
Deputy Inspectors		
Travel Time (Beyond 100-Mile Radius of Project Site)	\$50.00	Hour
Per-diem, Including Lodging (Beyond 100-Mile Radius)	Quote Upon Request	
Nuclear Gauge Transportation Fee (If Not Stored Onsite)	Portal to Portal	

Personnel are billed in four (4) hour and eight (8) hour blocks. Work over eight (8) hours per day, the first twelve (12) hours of work on Saturday, and work over forty (40) hours per week is billed at 1.5 times the above hourly rates. Any work over twelve (12) hours on Saturdays and work performed on Sundays or holidays is billed at 2.0 times the above hourly rates. Requested services which are required to be subcontracted by Atlas will be billed at cost plus fifteen percent (15%). A two (2) hour minimum is billed for cancellation of inspection personnel less than four (4) hours in advance of the scheduled inspection time. Steel fabrication shop inspection that is required at a distance greater than fifty (50) miles from our Riverside, California office will have billable travel costs including, but not limited to, commercial transportation at cost plus fifteen percent (15%), vehicle mileage at the above rate, travel time at the inspector's hourly rate, and per diem expenses not to exceed \$120.00 per day. Approximately one (1) hour of engineering (registered geotechnical engineer for soils inspections and certified engineer for all other types of inspections) is billed for every forty (40) hours of field inspection time. Delinquent invoices may be subject to interest, service charges, and collection expenses, including attorney's fees, at our discretion. Interest is assessed at a rate of 0.0329% per day (12% annually) for each day the invoice is past due. The date an invoice is due is determined to be the invoice date plus thirty (30) days.

NEWPORT-MESA USD: SPECIAL PROJECT INSPECTION SERVICES

## ATTACHMENT B

**CERTIFICATION – REQUEST FOR QUALIFICATIONS**

I certify that I have read and received a complete set of documents regarding the attached **Request for Qualifications (RFQ) # 111-21 – SPECIAL INSPECTION SERVICES** and the instructions for submitting an RFQ. I further certify that I must submit three (3) proposal copies, plus a complete copy on flash drive, of the firm's Proposal in response to this request and that I am authorized to commit the firm to the proposal submitted.


**Signature**

Operations Manager

**Title**

14457 Meridian Parkway,

**Address**

951-697-4777

**Telephone**

May 18th, 2021

**Date**

Bridget Sherman

**Typed or Printed Name**

Atlas Technical Consultants

**Company**

Riverside CA 92518

**Address****Fax**

If you are bidding as a corporation,  
please provide your corporate seal  
here:

## ATTACHMENT C

**STATEMENT OF EXPERIENCE AND FINANCIAL CONDITION**Company Name: Atlas Technical Consultant, LLC(Check One): X Corporation      Partnership      Sole ProprietorshipAddress: 14457 Meridian Parkway, Riverside CA 92518Telephone/FAX#: 951-697-4777Date and State of Formation/Incorporation: September 13, 2019, CaliforniaIs the company authorized to do business in California? YESBasis of Authorization: X California Corporation X California Business License  
     California Engineering License      Other (specify)

Identify the California office to be used for this contract if organization is located/headquartered outside of California:

Address: 14457 Meridian Parkway  
Riverside CA 92518**FINANCIAL INFORMATION**

State the company's California and total revenues for 2017, 2018, 2019:

	<u>2017</u>	<u>2018</u>	<u>2019</u>
California:			
Total:	<u>\$278,000,000</u>	<u>\$426,000,000</u>	<u>\$527,520,000</u>

Identify the largest project, in dollars, which your company has initiated or completed within the past five (5) years:

\$5.5 Million - Delta Skyway at Los Angeles International Airport



## ATTACHMENT D

**ANSWER THE FOLLOWING QUESTIONS**

1. Is the company or its owners connected with other companies as a subsidiary, parent, affiliate, or holding company? ☒ Yes ☐ No If yes, explain on a separate, signed sheet.  
\*Atlas has acquired several other firms, under the Atlas Umbrella
2. Does the company have an ongoing relationship or affiliation with an equipment manufacturer? ☐ Yes ☒ No If yes, explain on a separate, signed sheet.
3. Has the company (or any owner) ever defaulted on a contract forcing a surety to suffer a loss? ☐ Yes ☒ No If yes, explain on a separate, signed sheet.
4. In the past five (5) years, has the company had any project with disputed amounts more than \$50,000 or a project which was terminated by the owner, owner's representative or other contracting party and which required completion by another party? ☐ Yes ☒ No  
If yes, explain on a separate, signed sheet. State the project name, location, owner/contact person, telephone number, contract value, disputed amount, date and reason for termination/dispute.
5. Has the company, an affiliate company, or any owner ever declared bankruptcy or been in receivership? ☐ Yes ☒ No If yes, explain on a separate, signed sheet.
6. Has the company ever had an arbitration on contracts in the past five (5) years? ☐ Yes ☒ No If yes, explain on a separate, signed sheet. State the project name, location, owner/contact person, telephone number, contract value, disputed amount, a brief description and final resolution.
7. Does the company have any outstanding liens or stop notices for labor and/or materials filed against any contracts which have been done or are being done by the company? ☐ Yes ☒ No If yes, explain on a separate, signed sheet. State the project name, location, owner/contact person, telephone number, amount of dispute, and brief description of the situation.

THE UNDERSIGNED DECLARES UNDER PENALTY OF PERJURY THAT ALL OF THE INFORMATION SUBMITTED WITH THIS PROPOSAL IS TRUE AND CORRECT.

SIGNATURE:



NAME:

Bridget Sherman

TITLE:

Operations Manager

ATTACHMENT F

NEWPORT MESA UNIFIED SCHOOL DISTRICT

REQUEST FOR PROPOSALS AND STATEMENT OF QUALIFICATIONS FOR  
SPECIAL INSPECTION SERVICES

STATEMENT OF NON-CONFLICT OF INTEREST

The undersigned, on behalf of the consulting firm set forth below (the “Consultant”), does hereby certify and warrant that, if selected, the Consultant while performing the consulting services required by the Request for Qualification, shall do so as an independent contractor and not as an officer, agent or employee of the Newport Mesa Unified School District (“the District”). The undersigned further certifies and warrants that: (1) no officer or agent of the Consultant has been an employee, officer or agent of the District within the past two (2) years; (2) the Consultant has not been a source of income to pay any employee or officer of the District within the past twelve (12) months; (3) no officer, employee or agent of the District has exercised any executive, supervisory or other similar functions in connection with the Consultant Agreement or shall become directly or indirectly interested financially in the Consultant Agreement; and (4) the Consultant shall receive no compensation and shall repay the District for any compensation received by the Consultant under the Consultant Agreement should the Consultant aid, abet or knowingly participate in violation of this statement.

Signature

Bridget Sherman

Printed Name

Bridget Sherman

Title

Operations Manager

Date

May 18th, 2021