



**ACCESS THAT  
CONNECTS**

an ACRE  
brand

# In Response to Newport-Mesa USD RFP

PREPARED BY OPEN OPTIONS LLC.

Kyle Bruneault      Regional Sales Manager

16650 Westgrove, Suite 150  
Addison, TX 75001

[kylebruneault@acre-co.com](mailto:kylebruneault@acre-co.com) (706)695-7809



Newport-Mesa USD

Dear Newport-Mesa District Members,

Open Options was founded in 1997 and operated as a privately held, independent entity until November of 2018, at which time the company was acquired by ACRE (Access Control Related Enterprises). ACRE is a private equity backed global leader in the delivery of integrated, intelligent technologies and services. Founded in 2012, ACRE has played an instrumental role in development and implementation of security technology initiatives on a global scale. ACRE has taken a position in the market that one solution does not fit all. With continued acquisitions of RS2 and Feenics, ACRE has a diverse portfolio of enterprise level access control solutions. ACRE is uniquely positioned to hear customer needs and pain points, then provide a fitting solution based off those needs. For Newport-Mesa ACRE has decided to submit responses for each of our product lines, to ensure the district has all options open to them. Below is the proposal with Open Options (DNA Fusion).

For over 20 years, Open Options has built an access control platform that connects information and technology to deliver a fully scalable solution based on each customer's unique requirements. Open Options is known for:

- World class tech support and customer support including direct to the end user.
- Customer-driven feature enhancements
- Adapting to customers' existing & evolving technology environment

Open Options is committed to providing our customers new and innovative solutions. For instance, our recent developments in mobile applications and next generation thin client application drives operational efficiencies for our customers. Our customer focus is exemplified by our backwards compatibility with Mercury hardware and software which allows our customers to retain their investments for decades to come.

We collaborate closely with our customers who operate in highly regulated environments and who have varied requirements across their facilities both in the US and abroad. We currently are the system of choice by many school districts throughout the U.S. Our solutions support our customer's goals of having a standardized security protocol, a common (single) database for all access control locations, a flexible API that provides a powerful data interface, and a robust reporting and alarm management engine built for high volume and maximum efficiency. All of this is maximized when paired with our bi-directional integration into VMS systems.

Working with ACRE brings many benefits, first of which is our far-reaching partnerships with local integrator's as well as partnering manufacturers. ACRE has positioned itself to resell other complimenting manufacturers software and hardware if needed, this allows for customers to truly benefit from one company to order from, as well as it allows for more buying power and greater discounts when software packages are bundled and integrated together.

ACRE also has a robust and dynamic support team, all based here in the U.S. ACRE offers direct end user training online, or in person, as well as support agreements that are not mandatory, but do allow for direct support from us the manufacturer.

Our open business culture and dedication to service and support are what set us apart; when you do business with Open Options, you are doing business with people who genuinely care about your experience. We are confident that Open Options is the right choice for Newport-

Mesa's access control needs. We welcome the opportunity to meet with the district's team and your supporting staff, to share more information about our company, our unique value-proposition, and our approach to ensure this replacement and upgrade is a success.

The following proposal has been reviewed and approved by ACRE, all discounting and special offers within this proposal will be honored for up to 90 days after the decision date.

Sincerely,

VP of Sales  
Jim Kelly

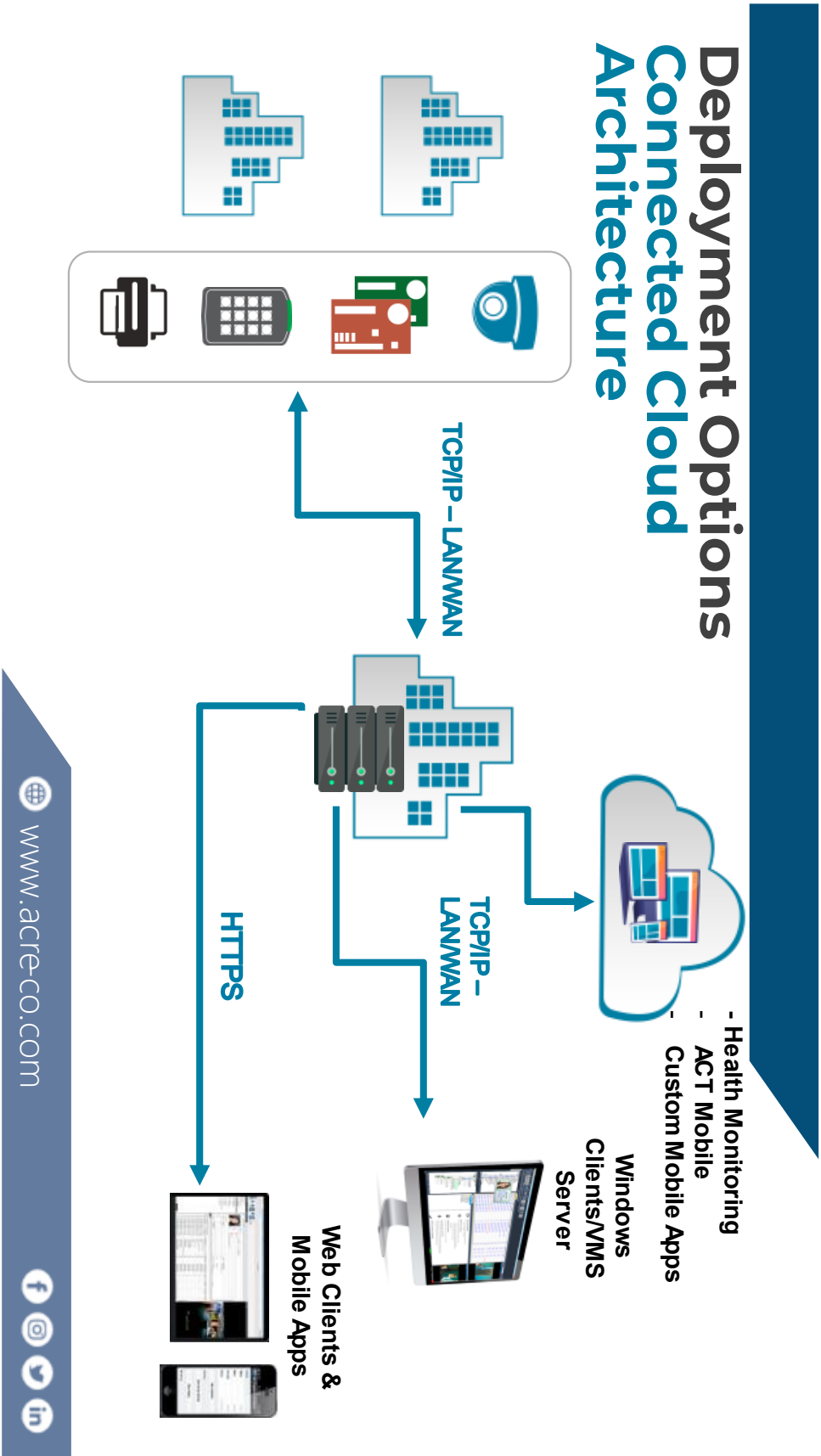
A handwritten signature in grey ink that reads "J Kelly". The signature is fluid and cursive, with the first name "J" and last name "Kelly" clearly distinguishable.

## Solution Narrative:

Open Options flagship product, DNA Fusion, is a diverse and robust software package, that supports the use of Mercury access control panels as well as many customizable user experiences. DNA Fusion leverages state of the art cyber protection to ensure security of data, as well as persons and property. For Newport-Mesa USD we propose an integration of DNA Fusion bi-directionally with Milestone's XProtect software. This provides the ability to both see video playback and live pop ups in the Access Control software, but also allows for all access events and alarms to be displayed in the VMS.

With DNA Fusion the district will have access to the access control software from many different options, first being a traditional thick client, second is a robust web client interface, and finally a fluid and customizable mobile application. With ACRE's ACT Mobile app, you will get far more than basic access control applications, we have built out a suite of very easily and on the fly customizable application tools used in many districts for a variety of different reasons. Specifically, we have a teacher's container that allows teachers to have an app specifically designed for them, it allows for common access control functions, but also the ability for mobile panic buttons, district wide mass notifications, as well as daily schedule views. Please see the following complete system architecture diagram:

# Deployment Options Connected Cloud Architecture





## Minimum System Requirements:

For a system of this size, the minimum requirements for a physical, or virtual server are below:

**Processor:** Intel Core i5 2.8 GHz + (or equivalent, multi-core)

**System memory:** 8 GB

**Disk space:** 500 GB

**Display:** Support for 1024x768 or higher/512 MB VRAM

**NIC:** 10/100 Ethernet

**OS:** Windows 2012 Server R2, Windows Server 2016, Windows Server 2019

**Database:** Supported Microsoft SQL 2012 through 2019

**Notes:**

- DNA Fusion is not supported on home, education, or mobile versions of Windows OS or Windows 10 S.
- RAID hardware configuration and backup medium recommended for Enterprise servers.

## Cyber Security:

ACRE as a whole takes Cyber security very seriously, utilizing all current encryption standards for data at rest, as well data in motion. With use of the Mercury panels all ACRE products support TLS 1.2 and AES 256-bit encryption. On top of that ACRE's products have consistent updates to mitigate any new vulnerabilities found in any of the server components.

ACRE does not stop at just access control, a pivotal part of our organization is Razberi Technologies, which is designed to keep IP devices secure from a cyber security standpoint. A link to their product offerings, which pair nicely with all access lines as well as video management systems is below:

<https://razberi.net/products-solutions/software-solutions/appliancedefense-automated-cybersecurity/>



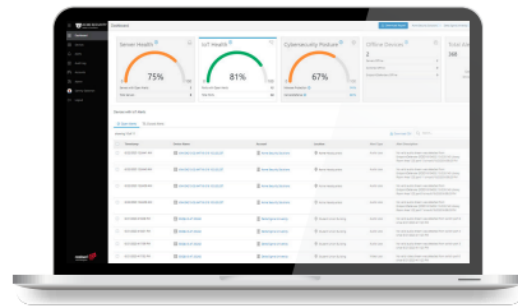
## Razberi Monitor™

### Remote Monitoring and Management for Physical Security Systems

*Uptime Assurance • Cyberthreat Protection • Problem Resolution*

Razberi Monitor™ is a software platform that provides a top-down view of the physical security network and ecosystem without IT resources. Purpose-built for security professionals, Monitor™ provides secure, remote visibility into the availability, performance, and cyber posture of servers, storage, cameras, and other networked security devices.

Razberi Monitor™ is an essential tool that simplifies the monitoring and support of a multi-site enterprise security system. The software predicts and prevents problems for security professionals while providing a centralized location for IT departments to view the video data.



#### HEALTH MONITORING SOFTWARE

**Configurable dashboards** provide a quick view of your system's overall health and cybersecurity posture.

**Customized reports** can be generated on demand for asset management and root cause analysis. Filter values can be updated for refining your report by location, device status, alert categories, and date ranges.

**Tagged alerts** ensure that specific and actionable information is visible and getting to the right person.

#### KEY FEATURES

- Detects cyber posture and problems with servers, cameras, and other IoT devices and delivers real-time alerts
- Identifies hard drive and storage problems
- Monitors cybersecurity
- Provides on-demand reports and dashboards
- Manages physical security assets
- Integrated with VMS and event management systems

#### KEY BENEFITS

##### Quick Issue Resolution

Resolve issues before they become bigger problems. Ensure that your system is working as expected. Perform continuous checks on system health and cybersecurity. Prevent service outages with early warning indicators.

##### Visibility and Compliance

Create custom views and alerts by location, device, and problem type. Use reports to demonstrate system performance and compliance. Share access with your service provider for proactive support and reduced service calls.

##### Manage Physical Security Assets

Track security devices by location. Get deep visibility into configurations, operating systems, and firmware status. Know what devices need updates and patches without IT resources.

Razberi.net • Razberi Monitor™ for End Users Datasheet

Simple, Secure Video Surveillance and IoT Solutions



## Razberi Monitor™ Remote Monitoring and Management for Physical Security Systems SPECIFICATIONS



Specifications	
Cloud Host	Amazon Web Services
Secure Cloud Communications	HTTPS TLS1.2 (uni-directional)
Single Connection to Cloud	HTTPS Web Proxy Support
Default Port (outbound only)	HTTPS (443/tcp)

Camera Health Specifications	
Codecs	H.264, H.265, MJPEG, MPEG4, uLaw
Streaming Protocol	RTSP/RTP/HTTP multipart form/ONVIF
Transport Protocol	UDP/TCP/HTTP tunnel/RTSP tunnel

Alarm Management Integrations	
Video Management Software	Milestone XProtect®
Security Information and Event Management Systems	SolarWinds®, Splunk
Event Messaging Protocol	Syslog

Cybersecurity Integrations	
Antivirus	CylancePROTECT™
IoT Protection	Razberi CameraDefense™

Compliance	
Audit Log	Supports NERC Critical Infrastructure Protection CIP-007: Cybersecurity - Systems Security Management

System Requirements Razberi Monitor™ premise application	
Operating System	Microsoft® Windows® 10 Enterprise (64-bit) Microsoft® Windows® Server 2016 (64-bit) Microsoft® Windows® Server 2019 (64-bit)
.NET	Microsoft® .NET 4.7.2 Framework

Alerts Matrix				
Alert Types	Core™	Windows Servers	Server SwitchIQ™	Endpoint Defender™
Servers and Switch Hardware				
Device Offline	✓	✓	✓	✓
Malware Protection	✓	✓	✓	n/a
Disk Health	✓	✓	✓	n/a
RAID Health	✓	✓	✓	n/a
CPU Temperature	✓	✓	✓	n/a
Internal Switch Traffic	n/a	n/a	✓	n/a
Windows Events				
Unexpected Shutdown	✓	✓	✓	n/a
Bugcheck Reboot	✓	✓	✓	n/a
File System Unstable	✓	✓	✓	n/a
Camera Health				
Audio Loss	n/a	n/a	✓	✓
Video Loss	n/a	n/a	✓	✓
Excessive Reconnects	n/a	n/a	✓	✓
PoE Reboot Upon Media Loss	n/a	n/a	✓	✓
Camera and IoT Cybersecurity				
Default Password	n/a	n/a	✓	✓
Common Password	n/a	n/a	✓	✓
Prohibited Password	n/a	n/a	✓	✓
Brute-Force Attack	n/a	n/a	✓	✓
Denial of Service Attack	n/a	n/a	✓	✓
Unauthorized Device	n/a	n/a	✓	✓
MAC Spoofing	n/a	n/a	✓	✓
Whitelist Violation	n/a	n/a	✓	✓

Contact Razberi Technologies for a demonstration or more information at [razberi.net](http://razberi.net)



ASSEMBLED IN THE  
**USA**

Americas: 469 828 3380  
LA: +52 55 4161 1511  
UK/EMEA: +44 (0)113 868 0160  
[salesinfo@razberi.net](mailto:salesinfo@razberi.net)  
dsrme20200722





## Pricing Proposal in MSRP:

As mentioned, ACRE provides unique buying power in that we have created reseller relationships with partners like Milestone, this allows for bulk buying of both systems, offering a wider variety of cost savings. Below, you will see MSRP cost of the DNA Fusion Access control System, then you will see the cost of bundling DNA Fusion with Milestone's XProtect.

### Access Control Software:

Qty	Part Number	Description	MSRP	Total	Discounted Cost
1	DNA-NEW-CWS-IPID	DNA Fusion Server License - Includes 10 Sub-Controllers (20 Readers) - 1 Server Client License - 1 additional client workstation license - 1 Badging Client License which allows the capture of images, create, and edit badge templates, and print to PVC cards.	\$2,686	\$2,686	\$2,417.40
40	DNA-CWS	Additional Client - Client licensing.	\$2,171	\$86,856	\$17,371.20
40	FUSION-XWEB-1	Web-based portal to manage personnel, reporting, monitor system activity, view, and control system devices. License provides system users ability to logon to the web browser. (must have a current connect care plan or Fusion hosted)	\$50	\$2,016	\$2,016.00
1	DNA-SC-50	50 Additional Sub Controller Licenses (100 Readers)	\$5,429	\$5,429	\$5,429.00
5	DNA-SC-1	1 Additional Sub-Controller License (2 Readers)	\$122	\$609	\$609.00
1	OO-MILESTONE	Comprehensive integration of the XProtect Essential, Express, Professional, Expert, Enterprise, and Corporate series of Network Video Recorders. This driver provides for the matching of events and the recall of the recorded video through the DNA Fusion application. Multiple camera views and live camera viewing directly from graphics map.	\$8,631	\$8,631	\$8,631.00
1	OO-MILESTONE-ACM	Software integration license allowing Milestone to import access control data from DNA Fusion. This functionality allows the VMS platform to surface access control information to include but not limited to card holder data and door information through the VMS platform/ GUI. Licensing from Milestone is required.	\$8,631	\$8,631	\$8,631.00



<b>Optional</b>	<b>OO-BOSCHALARM</b>	Integration license (site wide) for the Bosch B6512, B5512, B4512, B9512G, & B8512G Alarm Panel. This integration will display alarm panel events in the Fusion Event Manager and arm and disarm the BOSCH panel zones via Fusion (host-based macros). This integration does not support previous Bosch alarm panel models.	<b>\$6,164</b>		<b>Optional</b>
<b>Optional</b>	<b>OO-DMP</b>	Integration license for the DMP XR500N. This integration will display alarm panel events in Fusion Event Manager, arm and disarm the DMP panel zones via Fusion (host based macros), and send events to DMP panel which can dial out to monitoring service.	<b>\$8,631</b>		<b>Optional</b>
<b>1</b>	<b>OPENDX</b>	Open DX: Data Exchange Software Utility that imports personnel data from multiple sources including Active Directory, Databases, Text, and XML files.	<b>\$12,326</b>	<b>\$12,326</b>	<b>\$6,163.00</b>
<b>1</b>	<b>FAR-55000</b>	DTC4500e Single Sided Base Model , USB Printer and Ethernet, Printer with Two Year Warranty. ***Requires 45200 Printer Ribbon sold separately.	<b>\$4,004</b>	<b>\$4,004</b>	<b>\$4,004.00</b>
<b>4</b>	<b>FAR-45200</b>	DTC4500 YMCKO: Full-color ribbon with resin black and clear overlay panel – 500 images.	<b>\$198</b>	<b>\$792</b>	<b>\$792.00</b>
				<b>Total MSRP:</b>	<b>\$56,063.60</b>

## Pricing Proposal Bundled with Milestone in MSRP:

Software Licensing	Quantity of this Type	Licensing Cost	
		Unit	Total
XProtect Professional+ Base License	1	\$393.00	\$393.00
Device Licensing	406	\$132.75	\$53,896.50
Camera Device Packs (every two months)	1	\$0.00	\$0.00

Clients (Smart Client, Web Client)	Unrestricted	\$0.00	\$0.00
Mobile App (iOS & Android)	Unrestricted	\$0.00	\$0.00
Active Directory Integration	1	\$0.00	\$0.00
ACM: Access Control Integration Per Door	130	\$0.00	\$0.00
Camera Analytic Forensic Search (Axis, Hanwha, Bosch)	406	\$0.00	\$0.00
API/SDK (future development needs)	Free download	\$0.00	\$0.00
<b>One Time Purchase Total:</b>			\$54,289.50
5 Year Annual Support - Optional	Quantity of this Type	Support Cost	
		Unit	Total
5 YEAR CARE PLUS (Annual Support)	406	\$80.25	\$32,581.50
<b>Optional:</b> 5 YEAR CARE PREMIUM (End User Direct Access Annual Support)	406	\$36.75	\$14,920.50
<b>5 Year Total:</b>			\$32,581.5/ \$47,502
Training - Optional	Quantity of this Type	Training Costs	
		Unit	Total
MCIT (Milestone Technical Training - I & II)	3 Day (remote)	3 Day (remote)	\$1,595.00
Smart Client - End User Operator Training	2 Day (remote)	2 Day (remote)	\$795.00
Remote Custom NMUSD Milestone Training	1 Day	1 Day	\$1,900.00
Custom NMUSD Milestone Training	1 Day	1 Day	\$5,000.00

E-Learning Training Courses (75+ courses)	Unrestricted	Unrestricted	\$0.00
YouTube XProtect Training Courses	Unrestricted	Unrestricted	\$0.00

Milestone Pro Services - Optional	Quantity of this Type	Milestone Direct Service/ Support	
		Unit	Total
Install Assist (406 cameras)	1	406 cameras	\$12,525.00
Upgrade Assist	1	1	\$2,505.00
Mini System Health Check	Onsite/Remote Daily Rate	Onsite/Remote Daily Rate	\$2,505.00
System Health Check	Onsite/Remote Daily Rate	Onsite/Remote Daily Rate	\$5,010.00

Qty	Part Number	Description	MSRP	Total	Discounted Cost
1	DNA-NEW-CWS-IPID	DNA Fusion Server License - Includes 10 Sub-Controllers (20 Readers) - 1 Server Client License - 1 additional client workstation license - 1 Badging Client License which allows the capture of images, create, and edit badge templates, and print to PVC cards.	\$2,686	\$2,686	\$2,417.40
40	DNA-CWS	Additional Client - Client licensing.	\$2,171	\$86,856	\$17,371.20
40	FUSION-XWEB-1	Web-based portal to manage personnel, reporting, monitor system activity, view, and control system devices. License provides system users ability to logon to the web browser. (must have a current connect care plan or Fusion hosted)	\$50	\$2,016	\$2,016.00
1	DNA-SC-50	50 Additional Sub Controller Licenses (100 Readers)	\$5,429	\$5,429	\$5,429.00
5	DNA-SC-1	1 Additional Sub-Controller License (2 Readers)	\$122	\$609	\$609.00
1	OO-MILESTONE	Comprehensive integration of the XProtect Essential, Express, Professional, Expert, Enterprise, and Corporate series of Network Video Recorders. This driver provides for the matching of events and the recall of the recorded video through the DNA Fusion	\$8,631	\$8,631	Waived

<b>1</b>	<b>OO-MILESTONE-ACM</b>	Software integration license allowing Milestone to import access control data from DNA Fusion. This functionality allows the VMS platform to surface access control information to include but not limited to card holder data and door information through the VMS platform/ GUI. Licensing from Milestone is required.	<b>\$8,631</b>	<b>\$8,631</b>	<b>Waived</b>
<b>Optional</b>	<b>OO-BOSCHALARM</b>	Integration license (site wide) for the Bosch B6512, B5512, B4512, B9512G, & B8512G Alarm Panel. This integration will display alarm panel events in the Fusion Event Manager and arm and disarm the BOSCH panel zones via Fusion (host-based macros). This integration does not support previous Bosch alarm panel models.	<b>\$6,164</b>		<b>Optional</b>
<b>Optional</b>	<b>OO-DMP</b>	Integration license for the DMP XR500N. This integration will display alarm panel events in Fusion Event Manager, arm and disarm the DMP panel zones via Fusion (host based macros), and send events to DMP panel which can dial out to monitoring service.	<b>\$8,631</b>		<b>Optional</b>
<b>1</b>	<b>OPENDX</b>	Open DX: Data Exchange Software Utility that imports personnel data from multiple sources including Active Directory, Databases, Text, and XML files.	<b>\$12,326</b>	<b>\$12,326</b>	<b>\$6,163.00</b>
<b>1</b>	<b>FAR-55000</b>	DTC4500e Single Sided Base Model , USB Printer and Ethernet, Printer with Two Year Warranty. ***Requires 45200 Printer Ribbon sold separately.	<b>\$4,004</b>	<b>\$4,004</b>	<b>\$4,004.00</b>
<b>4</b>	<b>FAR-45200</b>	DTC4500 YMCKO: Full-color ribbon with resin black and clear overlay panel – 500 images.	<b>\$198</b>	<b>\$792</b>	<b>\$792.00</b>
				<b>Total MSRP:</b>	<b>\$38,801.60</b>

## Access Control Hardware:

Qty	Part Number	Description	MSRP	Total
30	E2-LP1502-MR52-S3	Teal 16 x 20 x 4.5 Enclosure with Tamper Switch, AQS1210B Power Supply and PDB-8C1R2 Power Distribution Board, LP1502 (on-board Ethernet connection and two reader support, 4 output and 8 input relays, single downstream 485 port with 6MB) and MR52-S3.	\$6,464	\$193,920
7	E2-2MR52-S3	Teal 16 x 20 x 4.5 Enclosure with Tamper Switch, AQS1210B Power Supply and PDB-8C1R2 Power Distribution Board and (2) MR52-S3's.	\$4,580	\$32,060
4	MR52-S3C	Teal 12 x 14 x 4.5 Enclosure with a 24-point terminal strip. Sub-Controller Enclosure houses a single MR52-S3 and comes equipped with a tamper switch.	\$1,734	\$6,936
			Total MSRP:	\$232,916

## Access Control Training:

Part Number	Description	MSRP
TR-DNAE-V	Essentials virtual training. 2 separate monitors, a web cam, ability to utilize remote software, and a quiet location is required. *Training must be paid in advance to reserve a seat. Price is per student.	\$1,575
TR-DNARCT-ONL	ONLINE Recertification - Required to be completed by DNA Fusion Certified personnel every 2 years to maintain support. Online, self-paced course. Participant will be trained in all new system hardware, software, features, and functions, and will have 2 weeks to complete. Fee is per student. Prerequisite: TR-DNAE-V	\$289
TR-DNAA-V	Advanced Training: virtual training. 2 separate monitors, a web cam, ability to utilize remote software, and a quiet location is required. Price is per person.	\$1,050



## Maintenance, Support Agreements and Pro Services:

Qty	Part Number	Description	MSRP	Total
1	CC-Plus-T3	Connect Care Plus Plan - Under 200 readers/locks - Email, Phone, Live Chat Support (M-F 8AM-5PM CST & Emergency After Hours), Direct Support, Software Upgrades, Knowledge Base Access, One month rebate training credit (Annual - \$3K Maximum), Remote assistance for system programming, configuration, maintenance, Annual Term	\$2,364	\$2,364
40	CC-CWS	Annual Connect Care per Client.	\$115.50	\$4,620
1	CC-IPID	Annual Connect Care Connect Care Maintenance per Photo-ID Station.	\$578	\$578
1	CC-INTRUSION	Annual Connect Care for DMP and Bosch intrusion detection integration.	\$704	\$704
1	CC-VID-INT	Annual Connect Care for video management system integration. Per site license.	\$542	\$542
1	CC-ODX	Annual Connect Care per instance of OpenDX Import Utility.	\$774	\$774
optional	OO-PS-HOUR	Professional Services provided by Open Options at an hourly rate with 1 hour minimum. All Customer/Integrator POs require an OO Quote number with approved scope of work. Site must be current on a Connect Care Plan to receive Pro Services.	\$434	\$434
			<b>Total MSRP:</b>	<b>\$10,016</b>

## Access Control Software



### Overview

DNA Fusion delivers a complete and scalable access control solution for any organization ranging from the multi-campus enterprise to a single lobby entrance. DNA Fusion takes full advantage of the distributed network architecture model and open platform control panels allowing organizations to monitor and manage several integrated systems through a single common interface.

### Software Architecture

DNA Fusion is developed using the latest Windows technology and utilizes a combination of both native and managed technologies to maximize speed as well as productivity. DNA Fusion takes full advantage of Visual Studio's C++ and .NET tools and leverages Microsoft's remoting technologies to communicate securely across the network. Microsoft SQL Server is employed for the DNA Fusion database to permit easy connectivity, management, and synchronization across other business systems.

## DNA Fusion™

### Features

- Intuitive graphical interface
- InfoReady reporting system
- Advanced graphic maps
- Elevator Control up to 128 floors
- Personnel & credential management
- Photo verification on events
- Segmented database (tenants)
- Easy drag and drop throughout
- Powerful video integrations
- Anti-passback
- Photo ID production
- Triggers and Macros
- Alarm management
- Auto e-mail alarms and events
- Fully customizable interface
- Built-in web browser
- Database import/export/sync
- Open platform database
- Authentic Mercury hardware
- Wireless lock integration
- Biometric interfaces
- FIPS 201 Compliance
- Web and Mobile solutions available



## DNA Fusion



### PC Specifications for DNA Fusion

NOTE: The following minimum specifications are meant to serve as a baseline to configuring the DNA Fusion system and do not take into account all the variables of your system. These recommendations are based on the current release version of DNA Fusion and are subject to change without notice.

#### Recommended Minimum Server Specifications

Enterprise Server / SQL Server\* (> 20 doors / > 5 clients)

<b>Processor:</b>	Intel Core i5 2.8 GHz + (or equivalent, multi-core)
<b>System memory:</b>	8 GB
<b>Disk space:</b>	500 GB
<b>Display:</b>	Support for 1024x768 or higher/512 MB VRAM
<b>NIC:</b>	10/100 Ethernet
<b>OS:</b>	Windows 2012 R2 Server, Windows Server 2016, Windows Server 2019

\*SQL Server provided by customer  
(Supported versions 2012 through 2019)

NOTE: RAID hardware configuration and backup medium recommended for Enterprise servers.

Corporate Server / SQL Express\* (< 20 doors / < 5 clients)

<b>Processor:</b>	Intel Core i5 2.8 GHz + (or equivalent)
<b>System memory:</b>	4 GB
<b>Disk space:</b>	250 GB
<b>Display:</b>	Support for 1024x768 or higher/256 MB VRAM
<b>NIC:</b>	10/100 Ethernet
<b>OS:</b>	Windows 2012 R2 Server, Windows Server 2016, Windows 10 (32 and 64 bit support), Windows Server 2019

\*SQL Server Express 2012 included / 10 GB database limit



IMPORTANT! DNA Fusion is NOT supported on home or mobile versions of Windows OS.

#### Recommended Client Specification

Client / Photo ID Client\*

<b>Processor:</b>	Intel Core i3 2.4 GHz + (or equivalent)
<b>System memory:</b>	4 GB
<b>Disk space:</b>	250 GB
<b>Display:</b>	Support for 1024x768 or higher/512 MB VRAM
<b>NIC:</b>	10/100 Ethernet
<b>OS:</b>	Windows 10 (32 and 64 bit support)

\*Photo ID Clients should have required ports (USB, serial, etc.) for any external capture or printing devices.

#### Network Requirements

- ▶ Open Options strongly recommends that all computers running DNA Fusion are connected on a Windows domain.
- ▶ DNA Fusion may be ran across different domains provided a bi-direction trust is in place between domains.
- ▶ If configuring in a Windows workgroup, all computers running DNA Fusion must be members of single dedicated workgroup. This configuration is less secure than a domain.



www.ooaccess.com  
Main: 877.818.7001  
Support: 855.818.7001

# Certified Integrators:

## Diamond Level integrators:

- **Time and Alarm**
  - Anna Thompson  
athompson@sciensbuildingsolutions.com  
(951) 685-1761
- **RedRock Technologies**
  - Garrett Dahlberg  
garrett.dahlberg@itredrock.com 949-860-0075
- **HCI Systems**
  - Jason Beardsley  
jbeardsley@hcisystems.net  
9096287773

## Platinum Level Integrators:

- **American Security Group**
  - Phil Icenhour  
picenhour@amergroup.com  
7605914000
- **Montgomery Hardware**
  - Nick Valenti  
nvalenti@montgomeryhardware.com  
(877) 917-0113
- **ADT**
  - Dave Dibble  
daviddibble@adt.com  
714-685-8172

## Advantage Level Integrators:

- **Integrated Security and Communications**
  - Paul Farrelly  
pfarrelly@isc-world.com  
(732) 506-9300
- **CML RW Security**
  - Jimmy Allen  
jimallen@cmlsecurity.us  
+1 855-426-5792
- **JMG Security Systems**
  - Gil Ledesma  
glesma@jmgsecurity.com  
8009004564
- **Paladin Technologies**
  - Justin Avignone  
javignone@paladintechnologies.com  
858-269-5729

## ATTACHMENT 1 SCOPE OF SERVICES

### SECURITY SYSTEM REQUEST FOR PROPOSAL (RFP)

#### SECTION 1 - TECHNICAL REQUIREMENTS

##### 1.02 Proposed System Solution

A. The District will select a new security system to provide integrated access control, video surveillance, and alarm monitoring for the District's facilities. The District's expectations for the new security system and manufacturer include:

1. A mature, reliable, and scalable system that has been successfully deployed in multiple projects of similar size, complexity, and integration to the District.

*DNA Fusion has been a diverse and robust access control platform for just over 20 years. Many school districts through out the U.S. use DNA Fusion as their district standard. Some vary in size from 10 doors all the way to 5,000.*

2. A manufacturer partner with the District to support and maintain the system.

*All of ACRE's products support Direct End User Agreements. Certain level of training is required as well as yearly renewal for ongoing support. Multi-year agreements are considered on a case by case basis.*

3. Web-based applications to minimize software installation and maintenance.

*DNA Fusion utilizes Fusion X as a flexible web client. The web client covers the majority of administrator level operations and alleviates the need for large number of application installations. For this RFP we proposed both 40 thick clients as well as web clients as there were not specifics on which were desired for each location.*

4. Flexibility to support the District's varying facility types and requirements.

*ACRE works with many districts across all brands, every changing needs and problems from school districts is an environment that ACRE thrives in. Custom support agreements or even quarterly scheduled engineer visits can be arranged for, per the districts requirements.*

5. Support for Mercury Security and other access control hardware supported by multiple system manufacturers.

*All ACRE brands support Mercury hardware.*

6. Product availability and support through multiple local certified integrators that can respond to calls for service in a timely manner.

*There is a large number of integrators in the Southern California area that are certified and trained on DNA Fusion, as well as cross trained on other ACRE brands. ACRE offers wide buying power and allows for integrators to offer cost savings with cumulative business, as well as the ability to purchase partner software through ACRE. For this proposal we have recommended purchasing Milestone's XProtect through ACRE, which would allow all integration fees to be waived. \$20,000 savings.*

B. Submit system narrative and manufacturer support narrative to demonstrate compliance with the District's security system goals and expectations.

*See system narrative above on page 3*

### **1.03 Software and License Pricing**

A. The District has developed the following criteria to demonstrate the anticipated security system size and capacities.

1. Simultaneous Users: 40

*DNA Fusion can support hundreds of users simultaneously, the license for these are concurrent so only users who are actively logged on count against the client seats. These can be thick clients, mobile clients or web clients.*

2. Workstation Locations: 50

3. Badge Enrollment Workstations (including portrait camera, flash, backdrop, and badge printer): 1

*Badging can be done from a central location by use of a network printer. This can be done on a thick client or web client. DNA Fusion offers the ability for complete badge layout and design.*

4. Video Recorders: 30 (1 per facility)

*Refer to VMS partner response.*

B. Provide Active Directory integration to populate employee user and cardholder information in the security system.

*DNA Fusion uses OpenDX as a tool to implement Active Directory integrations. This tool allows for custom import/export, or auxiliary database tie in, for real time updates of adding and removing access. This allows for autonomous card record management.*

C. Submit proposed manufacturer pricing as follows based on the anticipated system capacities.

1. Unit prices and quantities for system software and licenses.

*Please see pricing breakdown starting on page 8.*

2. Badge enrollment workstation including the following:

a. Workstation software and licenses.

*Please see pricing breakdown starting on page 8.*

b. Portrait camera with direct controls from workstation, tripod, and flash unit.

*Please see pricing breakdown starting on page 8.*

c. Portrait backdrop.

*Not sold by ACRE.*

d. Fargo DTC5000 or equal badge printer with simultaneous dual sided, over-the-edge printing and printer cleaning kit.

*Please see pricing breakdown starting on page 8.*

e. Printer materials to print 2,000 badges.

*Please see pricing breakdown starting on page 8.*

3. Software and licenses to support the anticipated facility equipment as indicated in the attached Security System Quantities Summary. The summary indicates the types of facilities and the quantity of each, card readers, cameras, intrusion panels, and security equipment locations (where access control equipment will be located).

*Please see pricing breakdown starting on page 8.*

4. Total cost to implement the anticipated system. The total cost shall not include off-the-shelf hardware such as servers, workstation computers, monitors, and other equipment that can be purchased by the District, through typical technology contracts.

*Please see pricing breakdown starting on page 8.*

5. Unit prices to add software licenses and capacity after the initial purchase where different from proposed initial system prices (e.g., escalation, renewal, etc.).

*DNA Fusion is licensed by sub-controller. If an addition of doors is required, the part number required would be DNA-SC-1, this would allow 1 additional sub controller on the system. The MSRP cost for this is \$122. If bought in bulk better pricing becomes available. Any additional client workstations would require DNA-CWS with an MSRP cost of \$1,008.00. DNA Fusion's Connect Care program offers the direct support required by the district, as well as the ongoing support agreement. At no point is this necessary, but it is a vital tool to staying current and up to date for cyber security and feature enhancements. The Connect Care plans are tiered, current scope of work has the district in Tier 3 being under 200 readers, the next tier (300 readers) would have a Connect Car increase of \$1,000.00.*

6. Unit prices for each manufacturer-provided Mercury access control hardware element.

*LP1502- MSRP \$2,205.00*

*MR-52-S3B- MSRP \$1,230.00*

7. Unit prices for each hardware element necessary to implement the system that must be purchased from the manufacturer.

*The Mercury panels are the only necessary items to be purchased through ACRE, they have a specific OEM Code written to the firmware to operate with DNA Fusion. These can be changed, but incur a charge when doing so.*

8. Unit prices for other hardware and equipment that can be purchased through the manufacturer (e.g., card readers, access cards, printers, etc.).

*ACRE offers a wide variety of card readers, card, printers and much more. For informational purposes the below is recommend due to current lead times and cost.*

*Readers:*

*WL-ET20-6WS MSRP \$378*

*Credentials:*

*WL-50h4 MSRP \$6.75*

#### **1.04 Integrators**

A. The number and quality of integrators that can support the manufacturer's product for the District will be evaluated.

*ACRE has many integrators throughout the U.S. ACRE has implmented a tiered system in which the top performing integrators receive better pricing as well as more training from the manufacturer. In southern California alone we have 3 Diamond level integrators and 3 Platinum level dealers for ACRE and DNA Fusion.*

B. Submit a list of certified integrators that can provide services and support to the District. Include contact information and address for each.

*Please see list starting on page 17.*

#### **1.05 Support to the District**

A. Direct manufacturer support is essential to the District. The District will train and certify their personnel who will service and support the security system.

*Dierct support is offered to certified trained end users.*

B. Submit proposed manufacturer pricing to support the District's maintenance staff as follows.

1. Annual software support and maintenance agreement to provide direct support to the district. Provide costs for a minimum of five years.]

*Connect Care Plus Plan - Under 200 readers/locks - Email, Phone, Live Chat Support (M-F 8AM-5PM CST & Emergency After Hours), Direct Support, Software Upgrades, Knowledge Base Access, One month rebate training credit (Annual - \$3K Maximum), Remote assistance for system programming, configuration, maintenance, Annual Term.*

*MSRP Cost \$2,364.00 annually not including any integrations or add ons.*

2. Training and certification for installation and maintenance technicians.

*Certified Essentials training has an MSRP cost of \$1,575.00 per student.*

3. Training and certification for system administrator and configurator staff.

*Certified Advanced training requires Essentials training be complete first.*

*MSRP Cost \$1,050.00 per student.*

4. Training and certification for system operators.

*Often this training is done by the system integrator, if manufacturer training is required, the Essentials course would be the option for operators as well. Certified Essentials training has an MSRP cost of \$1,575.00 per student.*

5. Include individual and group package pricing for each of these programs as applicable.

*Customized specific group training is offered, however the cost is built as needed.*

### **1.06 Video System Integration**

A. Include in the system narrative a detailed explanation of video system integration with access control and intrusion detection functions. Provide details for the following:

1. Integrated video system manufacturer.

*Milestone*

2. Relationship between the manufacturers.

*Top partner with Bi-Directional integration. Milestone software can be purchased through ACRE offering significant savings.*

3. Manufacturer roles and responsibilities including integration support.

*Subject matter experts will maintain support on their vertical, ACRE supports the integration of video into the PACs.*

4. Integrated user interface and system functions available through the integrated user interface.

*The Access Control integration between Milestone XProtect and many leading access control solutions is easy to use in the XProtect Smart Client User Interface. XProtect integrates with ACRE products (Open Options, RS2, Feenics). Unlike other Video Management solutions that steer customers to their own proprietary access control solution, Milestone provides customers the freedom of choice, and with so many ACAM integrations, customers are not married to a single manufacturer should they want to migrate to a different ACAM in the future.*

*The bi-directional integrations with Milestone's Access Control Technology partners allows NMUSD operators to display access control and alarms in a separate tab with associated video in the XProtect Smart Client. Also, operators can utilize standard XProtect video search, export, and review functionality. XProtect operators can use XProtect Map functions to display doors status on a graphical map, as well as lock and unlock doors. By using Milestone VMS as the viewing client, operators may also manage other third-party applications in the same user interface such as intercoms, people counting, heat mapping, loitering and other types of video analytics. These applications are installed separately.*

B. Provide software, licenses, professional services, and other costs necessary to implement the video system integration.

*Please see pricing above starting on page 8.*



## 1.07 Video Analytics

A. Include in the system narrative a detailed explanation of video analytics supported by the system. Provide details for the following:

*Please refer to VMS Partner response for this section.*

1. Video analytics integrated into the video surveillance system.
2. Partner manufacturers providing video analytics.
3. Key video analytics provided through partner manufacturers.
4. Operational differences of partner manufacturers versus integrated video analytics.
5. Integration of partner manufacturer video analytics into the user interface.

B. Included in the itemized pricing a detailed unit price list for video analytics. Include the following:

1. Integrated video analytics licenses and licensing scheme.
2. Primary partner video analytics licenses and licensing scheme.
3. Optionally, provide secondary partner video analytics licenses and licensing schemes.

## 1.08 Intrusion Detection Integration

A. Include in the system narrative a detailed explanation of intrusion detection system integration with access control and video surveillance functions. Provide details for the following:

1. Integrated intrusion detection system manufacturer.

*Both Bosch and DMP are supported.*

2. Relationship between the manufacturers.

*Bosch is supported on all ACRE product with a strong integration. DMP integration is limited to the XR500N*

3. Manufacturer roles and responsibilities including integration support.

*ACRE supports the integration, but not functionality of the intrusion system.*

4. Integrated user interface and system functions available through the integrated user interface.

*DNA Fusion can serve as the primary or secondary monitoring application Bosch alarm panels with a single interface for displaying and monitoring your intrusion detection system.*

*DNA Fusions integrates with DMP's XR500N panel to provide a single interface for displaying and monitoring intrusion detection system.*

B. Provide software, licenses, professional services, and other costs necessary to implement the intrusion detection system integration. *OO-BOSCHALARM MSRP \$6,164*

*OO-DMP MSRP \$8,631*



## **Reference:**

### **Northside ISD—Customer since 2006**

Northside ISD is a very large DNA System with Direct End User support. The district currently has roughly 5,000 doors, 213 client workstations, 47 badging stations, an Active Directory integration using Open DX and a VMS integration. Northside is in Texas but is a shining example of how DNA Fusion thrives in school district environments.

The district is open to discussing their system and experience but has not approved contact information to be made public on this proposal. If contact with the end user is desired, please reach out to Kyle Bruneault so that information can be provided privately.

[kylebruneault@acre-co.com](mailto:kylebruneault@acre-co.com)

Another great example of this is in:

### **Milton Hershey Schools—Customer since 2004**

This end user uses DNA Fusion to support 3,000 doors, 10 client workstations and multiple integrations.

These are a few of many districts throughout the U.S. that have standardized on DNA Fusion. Please see the following list for more, if any additional information is required, please contact Kyle Bruneault [kylebruneault@acre-co.com](mailto:kylebruneault@acre-co.com).

### **Central Union High School District**

**El Centro ESD**

**Calexico USD**

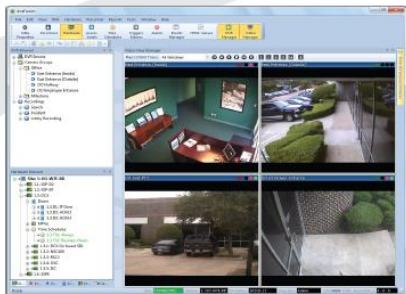
**Imperial USD**

**Denver Public Schools**

**Dallas ISD**

## Additional Information:

### DNA Fusion™ Video Interfaces



#### Features

- DNA Fusion™ integrates with most of the major video recording manufacturers
- View cameras in Tree View
- Adding VMS Server is quick and easy
- Scan for cameras eliminates time consuming setup
- Video thumbnails when hovering over camera in tree
- Camera groups
- Drag and drop cameras and groups for live view
- Drag and drop saved recordings for playback
- Playback controls on video window
- Playback of multiple cameras simultaneously
- Auto call-up of live or recorded video on access event or alarm
- PTZ Control and presets on supported VMS
- Ability to plot cameras and views on graphic maps in DNA Fusion

### Integrated Video

#### Overview

DNA Fusion™ provides a seamless interface to most major video management systems including DVR (Digital Video Recorder), NVR (Network Video Recorder), and VMS (Video Management Software) systems. DNA Fusion™ integrates video with access control to offer a complete security solution in a single user interface.

Users can associate video with alarms and events as well as control recording frame rates. In some cases, recorded video can even be imprinted with event information. Open Options has developed interfaces to most major brands of recorders. The framework in DNA Fusion allows for easy integration to other manufacturers provided a SDK or API is available.

Open Options is also an authorized distributor and trainer of Milestone System Products and distributes both Exacq Technologies and Salient in order to deliver a single source solution to meet your access control and video requirements.

## DNA Fusion & Alarm Interfaces



**BOSCH**  
Invented for life

### Overview

DNA Fusion™ interfaces with DMP and Bosch alarm panels allowing customers to interact with both access control and intrusion detection from a single, common user interface. Users can display alarm zones from supported alarm panels and arm/disarm points and zones directly from within DNA Fusion.

### Features

- DNA Fusion™ can monitor single points to multiple zones received from Bosch or DMP alarm panels
- Receive alarm panel events in DNA Fusion
- Arm/Disarm zones via DNA Fusion host-based macros or direct control
- Monitor access control and intrusion detection from single user interface
- Bosch and DMP panels act as dialer
- Auto discover alarm points

## Intrusion Detection

### Supported DMP Panel: XR550DN

The XR550DN Command Processor Panel has 574 zones, 96 doors of access, 506 Form C relays, 32 areas, and 10,000 users. It communicates via the digital dialer.

### Supported Bosch Panel: Mode 2

Available with DNA Fusion version 7, the Bosch Mode 2 integration features a cleaner user interface and easier configuration as well as a broader range of support. Operators can continue to receive alarm panel events and arm/disarm zones in DNA Fusion, but can also take advantage of extended capabilities such as programming users within the panel, controlling points from the graphics maps, and much more.

### Supported Panels

#### DMP:

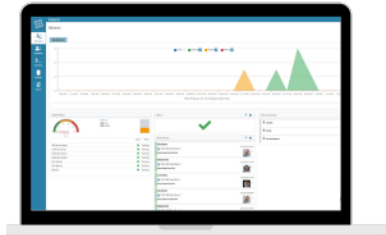
- DMP XR550DN

#### BOSCH:

Model	Areas Supported	Points (Zones) Supported
B6512	6	96
B5512	4	48
B4512	2	28
B9512G	32	599
B8512G	8	99

© 2019 Open Options. DNA Fusion and SSP are trademarks of Open Options. All other trademarks are the property of their respective owners. Information within this document is subject to change without notice. (01/19)

## Fusion Web Client



## Fusion X

DNA Fusion Web Interface

### Overview

**Fusion X** is the next generation of the DNA Fusion web-based experience. It is built on our Flex API and features our enhanced user interface.

**Fusion X** provides a secure way to remotely manage your DNA Fusion access control system from any supported web browser. **Fusion X** allows current users to search, view, and edit personnel as well as view and control system hardware right from a web browser. Alarms and Events can also be viewed, acknowledged, and cleared within **Fusion X**.

**Fusion X** lets you access the system remotely to manage or react to specific situations such as granting access after hours or controlling doors remotely. **Fusion X** was designed for ease of use and makes it simple to accomplish a variety of common tasks in DNA Fusion without having to resort to a thick client.

This powerful web application is the perfect solution for the remote management of your access control system.

### Features

Manage personnel:

- Add/remove access
- Set use limits
- View photos
- Activate/deactivate cards
- Trace history reporting
- Print badges
- Custom reporting

View and manage entire system hardware by site, controller, or door pages

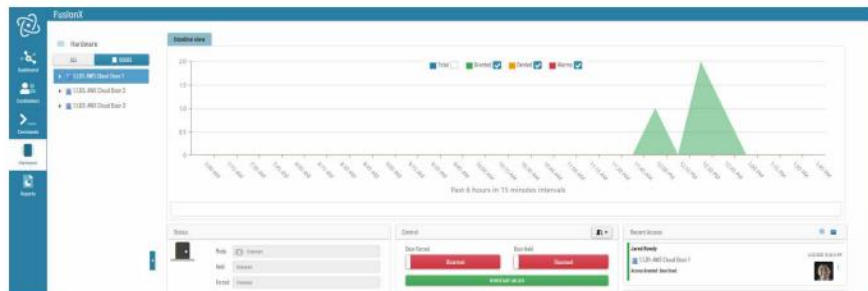
Control hardware:

- Momentary unlock of doors
- Change reader mode
- View status of system hardware
- Arm/disarm areas or points
- Control & view status of time schedules
- Trace history reporting

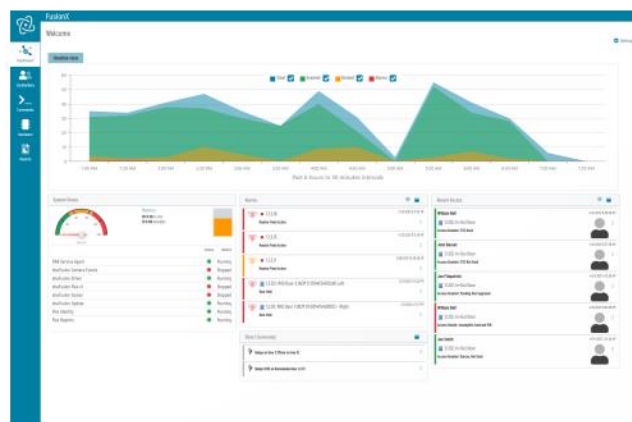
## Fusion X

### Personnel Detail

### Door Control View



### Customizable Dashboard



© 2021 Open Options, DNA Fusion and SSP are trademarks of Open Options, LLC. All other trademarks are the property of their respective owners. Information within this document is subject to change without notice. (0421)

Due to Planet Bids one document upload restrictions, ACRE submitted for both Open Options and RS2 in 1 single PDF. Separate PDF can be supplied if desired.



**RS2 Technologies**  
Access Control Solutions

# Software Solutions

## In Response to Newport- Mesa USD RFP

PREPARED BY OPEN OPTIONS LLC.

Kyle Bruneault

[kylebruneault@acre-co.com](mailto:kylebruneault@acre-co.com)

(706)695-7809

400 Fisher Street, Ste G  
Munster, IN 46321

[kylebruneault@acre-co.com](mailto:kylebruneault@acre-co.com) (706)695-7809



## Newport-Mesa USD

Dear Newport-Mesa District Members,

Established in 1998 RS2 Technologies has long been recognized for its open platform architecture approach that provides more options for customers across a wide range of markets. Known for its customer service and training focus, RS2 has stayed in tune with the demands of the security industry, as well as its integrator and dealer partners. The company was founded by people “in the integration world” and continues to operate with the goal to become the go-to access control manufacturer that provides an enhanced vision for our integration partners.

In 2019 RS2 was acquired by ACRE (Access Control Related Enterprises). ACRE is a private equity backed global leader in the delivery of integrated, intelligent technologies and services. Founded in 2012, ACRE has played an instrumental role in development and implementation of security technology initiatives on a global scale. ACRE has taken a position in the market that one solution does not fit all. With continued acquisitions of Open Options and Feenics, ACRE has a diverse portfolio of enterprise level access control solutions. ACRE is uniquely positioned to hear customer needs and pain points, then provide a fitting solution based off those needs. For Newport-Mesa USD ACRE has decided to submit responses for each of our product lines, to ensure the district has all options open to them. Below is the proposal with RS2 Technologies (Access It).

RS2's platforms are designed to easily integrate with other security system components, including fire and intrusion, video management, surveillance cameras, facility management platforms, HVAC controls, mobile credentials, biometric access credentials and much more. RS2 has a broad technology base that bring a multitude of options for end users, making its products highly customizable and scalable. The structure of RS2 has been built around the following four focus points:

- Innovation
- Outstanding Support
- Reliability
- Flexibility

RS2 simplifies access security and puts the customer first. We focus on product innovation and customer support, and we are known for being “nimble” when it comes to development practices. Product enhancement and performance are major focus areas of our engineering and support efforts. Being able to analyze potential issues, troubleshoot and resolve them in a timely manner continues to enhance our customer satisfaction ratings and better navigate incoming requests from our users.

Working with ACRE brings many benefits across all our brands, first of which is our far-reaching partnerships with local integrator's as well as partnering manufacturers. ACRE has positioned itself to resell other complimenting manufacturers software and hardware if needed, this allows for customers to truly benefit from one company to order from, as well as it allows for

more buying power and greater discounts when software packages are bundled and integrated together.



ACRE also has a robust and dynamic support team, all based here in the U.S. ACRE offers direct end user training online, or in person, as well as support agreements that are not mandatory, but do allow for direct support from us the manufacturer.

RS2 has made it their foremost goal to supply solutions to small office buildings to large industrial facilities, RS2 has the products to meet the needs of business and industry. With a rich feature set, continuous integrations, and the lowest total cost of ownership, we offer the best value in access control to a diverse array of industries.

The following proposal has been reviewed and approved by ACRE, all discounting and exclusive offers within this proposal will be honored for up to 90 days after the decision date.

Sincerely,

VP of Sales  
Jim Kelly

A handwritten signature in grey ink that reads "J Kelly". The signature is written in a cursive, flowing style.



## Solution Narrative:

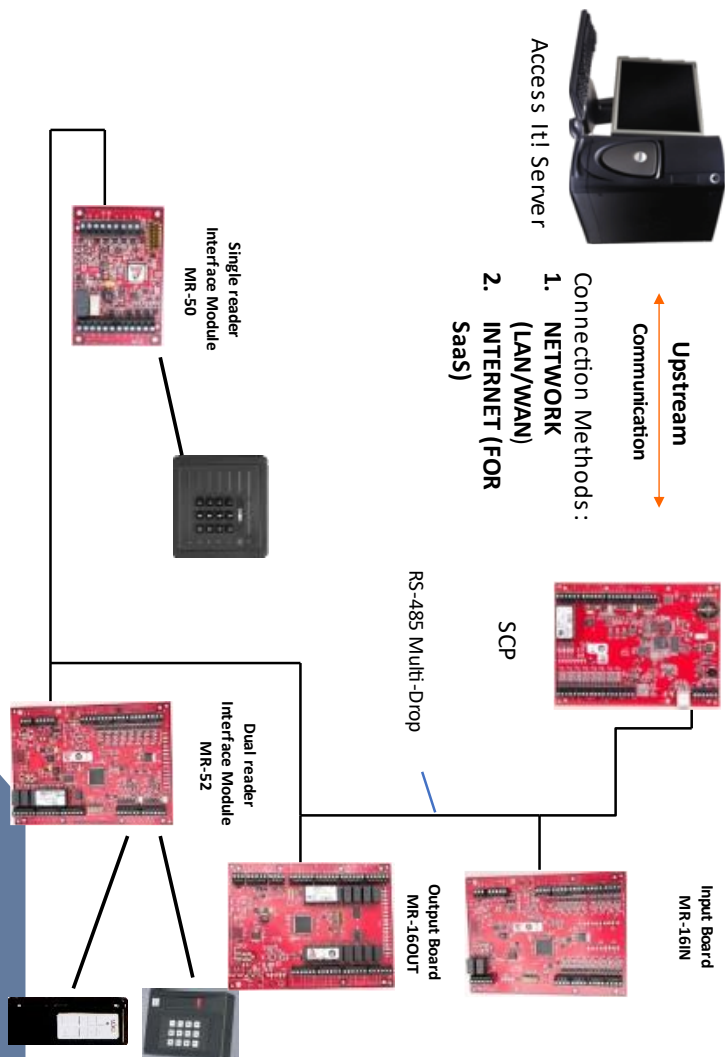
Your people, your brand, and your community matter, so leaving anything to chance is too much of a risk. For when it all matters, trust the team at RS2 Technologies to bring together the most open platform in Access Security and best in breed products. Our solutions create a welcoming, cost effective and secure environment for all your most valuable assets.

The RS2 Technologies' Access It! Universal.NET line of access control software opens a world of possibilities for customers interested in easy-to-use, end user-friendly design, delivering the most powerful access control on the market today.

The Access It! Universal.NET platform is proudly developed, supported, and built to make access security accessible to all. An end-to-end solution to help create a streamlined, automated, and powerful Access Control platform backed by our ***industry-leading support team.***

# Hardware

## Standard Topology



16/11/2022

[www.acre-co.com](http://www.acre-co.com)



# Minimum System Requirements:

## Supported Server and Client Operating Systems

- Windows 10 Professional
- Windows 10 Enterprise
- Windows Server 2016 Standard
- Windows Server 2016 Datacenter
- Windows Server 2019 Standard
- Windows Server 2019 Datacenter
- Windows Server 2022 Standard
- Windows Server 2022 Datacenter

**Access It! Universal.NET Version 9.x requires a 64-bit operating system.**

## Virtualization Platforms

- The virtualization layer is transparent to the Access It! Universal.NET software. If one of the above Operating Systems is capable of running on the virtualization software, Access It! Universal.NET is supported.

## Supported Database Engines

- SQL Server 2019 Express, Standard or Enterprise Editions
- SQL Server 2017 Express, Standard or Enterprise Editions  
**Included with Access It! Universal.NET CD-ROM.**  
[SQL Server Express Installation Parameters](#)
- SQL Server 2016 Express, Standard or Enterprise Editions
- SQL Server 2014 Express, Standard or Enterprise Editions

**Configured for SMO (Shared Management Objects) support.**

## Client Requirements

### Minimum

- Processor Type: Intel Pentium Dual Core or AMD Athlon II

- Processor Speed: 2 GHz Processor or faster
- 64-bit Operating system
- **32-bit Operating Systems are no longer supported**
- 4GB of RAM (64-bit OS)
- 20GB Free Hard Drive Space
- TCP/IP Client/Server Connectivity
- Display supporting minimum resolution of 800x600
- 



## Recommended

- Processor Type: Intel Core i3, AMD Phenom II x4, or greater
- Processor Speed: 2.6 GHz Processor or faster
- 64-bit Operating system
- **32-bit Operating Systems are no longer supported**
- 8GB of RAM or more (64-bit OS)
- 20GB Free Hard Drive Space
- TCP/IP Client/Server Connectivity

## Server Requirements

### Minimum

- Processor Type: Intel Core i3 or AMD Phenom II x4
- Processor Speed: 2.6 GHz Processor or faster
- 64-bit Operating system
- **32-bit Operating Systems are no longer supported**
- 8GB of RAM
- 250GB Free Hard Drive Space
- TCP/IP Server/Client Connectivity
- Display supporting minimum resolution of 800x600

### Recommended

- Processor Type: Intel Xeon, AMD Opteron, or greater
- Processor Speed: 2.6 GHz Processor or faster
- 64-bit Operating system
- **32-bit Operating Systems are no longer supported**
- 16GB of RAM or more
- 500GB Free Hard Drive Space or more
- TCP/IP Server/Client Connectivity



## Cyber Security:

ACRE as a whole takes Cyber security very seriously, utilizing all current encryption standards for data at rest, as well data in motion. With use of the Mercury panels all ACRE products support TLS 1.2 and AES 256-bit encryption. On top of that ACRE's products have consistent updates to mitigate any new vulnerabilities found in any of the server components.

ACRE does not stop at just access control, a pivotal part of our organization is Razberi Technologies, which is designed to keep IP devices secure from a cyber security standpoint. A link to their product offerings, which pair nicely with all access lines as well as video management systems is below:

<https://razberi.net/products-solutions/software-solutions/appliancedefense-automated-cybersecurity/>







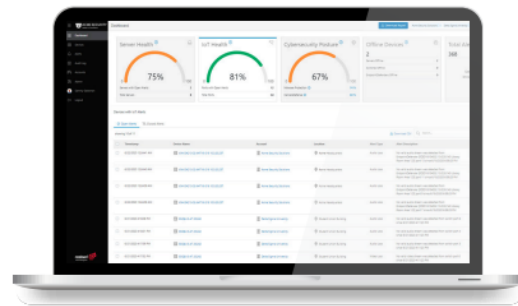
## Razberi Monitor™

### Remote Monitoring and Management for Physical Security Systems

*Uptime Assurance • Cyberthreat Protection • Problem Resolution*

Razberi Monitor™ is a software platform that provides a top-down view of the physical security network and ecosystem without IT resources. Purpose-built for security professionals, Monitor™ provides secure, remote visibility into the availability, performance, and cyber posture of servers, storage, cameras, and other networked security devices.

Razberi Monitor™ is an essential tool that simplifies the monitoring and support of a multi-site enterprise security system. The software predicts and prevents problems for security professionals while providing a centralized location for IT departments to view the video data.



#### HEALTH MONITORING SOFTWARE

**Configurable dashboards** provide a quick view of your system's overall health and cybersecurity posture.

**Customized reports** can be generated on demand for asset management and root cause analysis. Filter values can be updated for refining your report by location, device status, alert categories, and date ranges.

**Tagged alerts** ensure that specific and actionable information is visible and getting to the right person.

#### KEY FEATURES

- Detects cyber posture and problems with servers, cameras, and other IoT devices and delivers real-time alerts
- Identifies hard drive and storage problems
- Monitors cybersecurity
- Provides on-demand reports and dashboards
- Manages physical security assets
- Integrated with VMS and event management systems

#### KEY BENEFITS

##### Quick Issue Resolution

Resolve issues before they become bigger problems. Ensure that your system is working as expected. Perform continuous checks on system health and cybersecurity. Prevent service outages with early warning indicators.

##### Visibility and Compliance

Create custom views and alerts by location, device, and problem type. Use reports to demonstrate system performance and compliance. Share access with your service provider for proactive support and reduced service calls.

##### Manage Physical Security Assets

Track security devices by location. Get deep visibility into configurations, operating systems, and firmware status. Know what devices need updates and patches without IT resources.

Razberi.net • Razberi Monitor™ for End Users Datasheet

Simple, Secure Video Surveillance and IoT Solutions



## Razberi Monitor™ Remote Monitoring and Management for Physical Security Systems SPECIFICATIONS



Specifications	
Cloud Host	Amazon Web Services
Secure Cloud Communications	HTTPS TLS1.2 (uni-directional)
Single Connection to Cloud	HTTPS Web Proxy Support
Default Port (outbound only)	HTTPS (443/tcp)

Camera Health Specifications	
Codecs	H.264, H.265, MJPEG, MPEG4, uLaw
Streaming Protocol	RTSP/RTP/HTTP multipart form/ONVIF
Transport Protocol	UDP/TCP/HTTP tunnel/RTSP tunnel

Alarm Management Integrations	
Video Management Software	Milestone XProtect®
Security Information and Event Management Systems	SolarWinds®, Splunk
Event Messaging Protocol	Syslog

Cybersecurity Integrations	
Antivirus	CylancePROTECT™
IoT Protection	Razberi CameraDefense™

Compliance	
Audit Log	Supports NERC Critical Infrastructure Protection CIP-007: Cybersecurity - Systems Security Management

System Requirements Razberi Monitor™ premise application	
Operating System	Microsoft® Windows® 10 Enterprise (64-bit) Microsoft® Windows® Server 2016 (64-bit) Microsoft® Windows® Server 2019 (64-bit)
.NET	Microsoft® .NET 4.7.2 Framework

Alerts Matrix				
Alert Types	Core™	Windows Servers	Server SwitchIQ™	Endpoint Defender™
Servers and Switch Hardware				
Device Offline	✓	✓	✓	✓
Malware Protection	✓	✓	✓	n/a
Disk Health	✓	✓	✓	n/a
RAID Health	✓	✓	✓	n/a
CPU Temperature	✓	✓	✓	n/a
Internal Switch Traffic	n/a	n/a	✓	n/a
Windows Events				
Unexpected Shutdown	✓	✓	✓	n/a
Bugcheck Reboot	✓	✓	✓	n/a
File System Unstable	✓	✓	✓	n/a
Camera Health				
Audio Loss	n/a	n/a	✓	✓
Video Loss	n/a	n/a	✓	✓
Excessive Reconnects	n/a	n/a	✓	✓
PoE Reboot Upon Media Loss	n/a	n/a	✓	✓
Camera and IoT Cybersecurity				
Default Password	n/a	n/a	✓	✓
Common Password	n/a	n/a	✓	✓
Prohibited Password	n/a	n/a	✓	✓
Brute-Force Attack	n/a	n/a	✓	✓
Denial of Service Attack	n/a	n/a	✓	✓
Unauthorized Device	n/a	n/a	✓	✓
MAC Spoofing	n/a	n/a	✓	✓
Whitelist Violation	n/a	n/a	✓	✓

Contact Razberi Technologies for a demonstration or more information at [razberi.net](http://razberi.net)



Americas: 469 828 3380  
LA: +52 55 4161 1511  
UK/EMEA: +44 (0)113 868 0160  
[salesinfo@razberi.net](mailto:salesinfo@razberi.net)  
dsrme20200722



## Pricing Proposal in MSRP:

As mentioned, ACRE provides unique buying power in that we have created reseller relationships with partners like Milestone, this allows for bulk buying of both systems, offering a wider variety of cost savings. Below, you will see MSRP cost of the Access It! Access control System, then you will see the cost of bundling Access It! with Milestone's XProtect.

## Direct Support Agreement:

Part Number	Description	MSRP
P-DS-SL100	One-year direct support agreement for SL100-SOFT. Includes all version updates and upgrades. Platinum DSA also includes (4) Annual sessions with the Field Service Engineer (FSE). These sessions are to be scheduled directly with the FSE. One of the sessions will be onsite at a location agreed upon by the end user. *Pricing could be subject to change based non-normal travel accommodations or anything outside of the continental US. The purchase order must list the serial number of the qualifying licensing serial number. Before a Direct Support Agreement may be purchased, the end user must be running the latest version of Access It! Universal.NET	13,659

## Training Cost:

Part Number	Description	MSRP
DEALER TRAINING	Dealer Training: Please go to <a href="https://training.acre-co.com/essentialtrainingtr-accessite">https://training.acre-co.com/essentialtrainingtr-accessite</a> for Access It! Universal software training sessions offered by ACRE - Access It! brand. Pricing is \$800 per Technician or End User attending online training classes. Please contact your Regional Sales Manager for questions	\$ 800.00

## Access Control software:

Part Number	Description	MSRP	Discounted Cost
SL100-SOFT	Stand-alone or multi-user access control software. Supports up to one hundred SCPs with unlimited client license expandability. Includes: (1) S-CLIENT Standard Client License Ships with a Software Certificate and instructions	\$10,259.00	\$10,259.00
S-CLIENT-50P	Optional fifty pack add on client licenses for Access It! Universal.NET. Requires one of the base Access It! Universal.NET - Standard software configurations	\$31,392.00	\$15,696.00
S-DVR-[Mile]-50P	Optional fifty pack add on DVR interface client licenses. Supports unlimited digital video recorders. Requires one of the base Access It! Universal.NET - Standard software configurations Please list the DVR manufacturer's name on all purchase orders See the rs2tech.com website for supported video manufacturers: <a href="https://rs2tech.com/RS2WebApp/Products/PartnerIntegrations/DVR">https://rs2tech.com/RS2WebApp/Products/PartnerIntegrations/DVR</a>	\$14,489.00	Waived if VMS is purchased through ACRE
S-BADGE	Optional system site license enabling the capturing and printing of ID badges. Requires one of the base Access It! Universal.NET - Standard software configurations	\$1,208.00	\$1,208.00
S-DATAEXCHG	Optional system site license enabling the use of data exchange packages to manually or automatically add, modify, or delete cardholder/card records via external data sources. Supported data sources: Microsoft Access, Microsoft Active Directory, Microsoft Excel, Microsoft SQL Server, ODBC, and Text File Requires one of the base Access It! Universal.NET - Standard software configurations	\$7,244.00	\$3,622.00
S-WEB	Optional system site license enabling the use of WEB Clients. Includes: Device aware mobile interface Requires one of the base Access It! Universal.NET - Standard software configurations Requires an S-CLIENT license for each concurrent session on the server	\$609.00	\$609.00
S-API-MIPS	Optional system wide annual license enabling the use of the Milestone MIPS integration to push event, cardholder/card data etc... Requires one of the base Access It! Universal.NET - Standard software configurations Milestone licensing not included. <b>Renewed Annually</b>	\$2,415.00	\$2,415.00
Total:		\$67,616.00	\$33,809.00

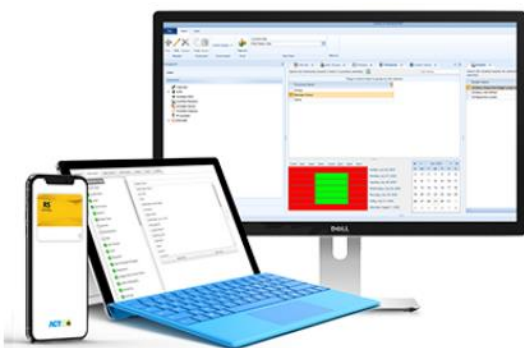
## Access Control Hardware:

Part Number	Description	Qty	MSRP	Total
LP-1502	Intelligent two portal two reader combination controller with 10/100Base-T Ethernet, and dual reader interface module capable of Wiegand, clock and data, OSDP, magstripe, keypad, LCD, and biometric technologies. Supports Multi-Drop mode with OSDP allowing for two OSDP readers to be wired to a single reader port for paired in/out configuration. A single two-wire RS-485 channel provides expansion for up to thirty-one downstream SIOs controlling a maximum of sixty-four portals. Capacity: 240,000 cardholders and 50,000 transactions. Support for: 2 portals/4 readers/4 aux inputs/2 aux outputs Compatible SIOs: MR-16IN, MR-16IN-S3, MR-16OUT, MR-16OUT-S3, MR-50, MR-50-S3, MR-51E, MR-52, MR-52-S3, and MR-62E	30	\$2,100.00	\$63,000.00
MR-52-S3B	Two portal four reader B SIO with reader interface capable of Wiegand, clock and data, OSDP, magstripe, keypad, LCD, and biometric technologies. Supports Multi-Drop mode via OSDP allowing for two OSDP readers to be wired to a single reader port for paired in/out configuration. Support for: 2 portal/4 reader/4 aux inputs/4 aux outputs Requires an EP/LP-1501-PLUS, EP/LP-1502, EP/LP-2500, EP/LP-4502, or MINI-SCP/SCP system controller Series 3 SIOs are not backwards compatible with the 2G series of hardware	48	\$1,171.00	\$56,208.00
FPO75-B100C4D8PE4M	4DR Dual Voltage Integrated RS2 Power System: 75W 2A/12V and 2A/24V, 8 auxiliary class II outputs power limited at 2.5A per output and 4 lock control outputs fused at 3A per output, E4M enclosure with RS2 controller back plate. Enclosure: 24 x 20 x 6.5 Maximum Mercury panels: 2	23	\$571.00	\$13,133.00
FPO150-D8PE4M	8DR Single Voltage Integrated RS2 Power System: 150W power supply 12A/12V or 6A/24V, 8 auxiliary outputs class 2 power limited at 2.5A per output, E4M enclosure with RS2 controller back plate. Enclosure: 24 x 20 x 6.5 Maximum Mercury panels: 4	3	\$542.00	\$1,626.00
FPO150/250-2C82D8PE6M1	16DR Dual Voltage Integrated RS2 Power System - medium enclosure: 400W 12A/12V and 20A/24V, 16 auxiliary class II outputs power limited at 2.5A per output and 16 lock control outputs fused at 3A per output, E6M1 enclosure with RS2 controller back plate and door mount kit. Enclosure: 30 x 23 x 6.5 Maximum Mercury panels: 8	4	\$1,504.00	\$6,016.00
FAR-55000	DTC4500e Single Sided Base Model, USB Printer and Ethernet, Printer with Two Year Warranty. ***Requires 45200 Printer Ribbon sold separately.	1	\$4,004.00	\$4,004.00
FAR-45200	DTC4500 YMCKO: Full-color ribbon with resin black and clear overlay panel – 500 images.	4	\$198.00	\$792.00
			Total:	\$ 144,779.00



## The RS2 Advantage

RS2 Technologies is your trusted Access Security source. From industry-leading hardware solutions to powerful unified Access Management Software and Integrations. To protect what matters most, start with RS2.



**Intelligent Security**  
*Simplified*



### Scalable

Built on true open-platform infrastructure to scale with your needs.



### Affordable

The lowest start-up costs and the lowest cost of total ownership.



### Cyber Secure

Powerful cyber-secure bundles to help you save money and keep your sites secure.



### Experienced

Over 20 Years of service to provide you the best experience in security.



### Rapid Deploy

RS2 maintains inventory on-hand to ensure timely delivery to you.



### Support & Service

Our solutions are proudly developed and supported right here in the USA.



Scan for  
More Information

an ACRE  
brand

RS2 HEADQUARTERS, 400 Fisher Street, Suite G, Munster, IN 46321

[www.rs2tech.com](http://www.rs2tech.com)

219.836.9002 / 877.682.3532



## RS2 Technologies

Access Control Solutions

# Software Solutions

### Access It<sup>®</sup>

Standard Edition

### Access It<sup>®</sup>

Enterprise Edition

Access Levels	32,767 Per Site	32,767 Per Site
Access Levels Per Card	Up to 128	Up to 128
Advanced Window Control	Yes	Yes
Alarm/Event Filters	Yes	Yes
Anti-Passback	Yes	Yes
API	Yes	Yes
Automatic Backups	Yes	Yes
bacNET Support	Yes	Yes
Badging	Optional	Optional
Biometric Support	Optional	Optional
Built-In Reports	125+	125+
Calendar Scheduler	Yes	Yes
Card Groups	Yes	Yes
Cardholders	Unlimited	Unlimited
Custom Reports	Yes	Yes
Data Exchange	Optional	Optional
Data Import/Export	Optional	Optional
Database Replication Support	Yes	Yes
Data-on-Card Solutions	Yes	Yes
Destination Dispatch	Optional	Optional
DVR/NVR Support	Yes	Yes
Elevator Control	Yes	Yes
E-mail Notification	Optional	Optional
Escort Mode	Yes	Yes
Holiday Groups	8	8
Holidays	255 Per Site	255 Per Site
Intercom	Optional	Optional
Live Mustering	Yes	Yes
Lockset Integrations	Yes	Yes
Macros	Yes	Yes
Maps	Yes	Yes
Multiple Credentials Per Person	Yes	Yes
Operating Modes	Yes	Yes
OSDP Support	Yes	Yes
pivCLASS Authentication	Optional	Optional
Precision Access	Yes	Yes
Regional Servers	No	Optional
Report Designer	Optional	Optional
SCPs	Up to 1,024 Per Server	Up to 1,024 Per Server
Sites(Partitioning)	No	Yes
Smart Card Encoding	Optional	Optional
Tasks Per SCP	256	256
Themes	Yes	Yes
Time & Attendance	Optional	Optional
Time-based Activate/Expire	Date or Date & Time	Date or Date & Time
Timezones Per Site	255	255
User Definable Event/Alarm Colors	Yes	Yes
Visitor Management	Multiple Integrations	Multiple Integrations
Web Client	Optional	Optional

### Software Service and Support

RS2 Technologies is dedicated to providing expert technical support and services in a timely and accurate manner. We understand that supporting our customers' needs is as important as the products that we develop. Our support staff is comprised of knowledgeable and experienced technicians who can quickly assist with any issues that may arise and our average wait time for support is an industry leader.

RS2 Technologies, LLC • 400 Fisher Street, Suite G • Munster, IN 46321 • 877.682.3532



## Certified Integrators:

### Diamond Level integrators:

- **HCI Systems**
  - Jason Beardsley  
jbeardsley@hcisystems.net  
9096287773
- **RedRock Technologies**
  - Garrett Dahlberg  
garrett.dahlberg@itredrock.com 949-860-0075

### Platinum Level Integrators:

- **Enterprise Security**
  - Sam Hurst
  - samuel.hurst@entersecurity.com  
(714) 905-4375
- **Photo Scan Los Angeles (PSLA)**
  - Gary Hoffner  
garyh@pslasecurity.com  
805-581-4448
- **Paladin Technologies**
  - Justin Avignone
  - javignone@paladintechnologies.com
  - 858-269-5729
- **SecureSite Technologies**
  - Jason Cook  
jcook@securesitetg.com  
626-826-1624

### Advantage Level Integrators:

- **EKC Enterprises**
  - Clint Hamilton  
chamilton@ekccorp.com  
(559) 438-0330
- **ASSI Security**
  - Bill Vuono  
bvuomo@assisecurity.com  
(949) 955-0244 x124
- **Apple Valley Communications**
  - Jeff Marek  
jmarek@avcsystems.com  
(760) 247-2668

## ATTACHMENT 1 SCOPE OF SERVICES

### SECURITY SYSTEM REQUEST FOR PROPOSAL (RFP)

#### SECTION 1 - TECHNICAL REQUIREMENTS

##### 1.02 Proposed System Solution

A. The District will select a new security system to provide integrated access control, video surveillance, and alarm monitoring for the District's facilities. The District's expectations for the new security system and manufacturer include:

1. A mature, reliable, and scalable system that has been successfully deployed in multiple projects of similar size, complexity, and integration to the District.

*RS2 has established a well established access control background providing solutions for many varieties of customers since 1998. Access It! Is currently on version 9 and has yearly updates to make sure the software is current with advanced features and security.*

2. A manufacturer partner with the District to support and maintain the system.

*All of ACRE's products support Direct End User Agreements. Certain level of training is required as well as yearly renewal for ongoing support. Multi-year agreements are considered on a case by case basis. RS2 offers Platinum Level support agreements which includes all version updates and upgrades. Platinum DSA also includes (4) Annual sessions with the Field Service Engineer (FSE). These sessions are to be scheduled directly with the FSE. One of the sessions will be onsite at a location agreed upon by the end user. \*Pricing could be subject to change based on non-normal travel accommodations or anything outside of the continental US. The purchase order must list the serial number of the qualifying licensing serial number. Before a Direct Support Agreement may be purchased, the end user must be running the latest version of Access It! Universal.NET.*

3. Web-based applications to minimize software installation and maintenance.

*Access It! Has a full function web client for user friendly and dynamic controls for system administrators and operators.*

4. Flexibility to support the District's varying facility types and requirements.

*ACRE works with many districts across all brands, every changing needs and problems from school districts is an environment that ACRE thrives in. Custom support agreements or even quarterly scheduled engineer visits can be arranged for, per the districts requirements.*

5. Support for Mercury Security and other access control hardware supported by multiple system manufacturers.

*All ACRE brands support Mercury hardware.*

6. Product availability and support through multiple local certified integrators that can respond to calls for service in a timely manner.

*There is a large number of integrators in the Southern California area that are certified and trained on Access It!, as well as cross trained on other ACRE brands. ACRE offers wide buying power and allows for integrators to offer cost savings with cumulative business, as well as the ability to purchase partner software through ACRE. For this proposal we have recommended purchasing Milestone's XProtect through ACRE, which would allow all integration fee's to be waived. \$20,000 savings.*

B. Submit system narrative and manufacturer support narrative to demonstrate compliance with the District's security system goals and expectations.

*Please see system narrative above on page 4.*

### **1.03 Software and License Pricing**

A. The District has developed the following criteria to demonstrate the anticipated security system size and capacities.

1. Simultaneous Users: 40

*Access It! can support hundreds of users simultaneously, the license for these are concurrent so only users who are actively logged on count against the client seats. These can be thick clients, mobile clients or web clients. Access IT! also offers the ability to setup regionalized server if the district requires.*

2. Workstation Locations: 50

3. Badge Enrollment Workstations (including portrait camera, flash, backdrop, and badge printer): 1

*Badging can be done from a central location by use of a network printer. This can be done on a thick client or web client. Access It! offers the ability for complete badge layout and design.*

4. Video Recorders: 30 (1 per facility)

*Refer to VMS partner response.*

B. Provide Active Directory integration to populate employee user and cardholder information in the security system.

*Access It! utilizes DataExchange as a tool to implement Active Directory integrations. This tool allows for custom import/export, or auxiliary database tie in, for real time updates of adding and removing access. This allows for autonomous card record management.*

C. Submit proposed manufacturer pricing as follows based on the anticipated system capacities.

1. Unit prices and quantities for system software and licenses.

*Please see pricing breakdown starting on page 11.*

2. Badge enrollment workstation including the following:

a. Workstation software and licenses.

*Please see pricing breakdown starting on page 11.*

b. Portrait camera with direct controls from workstation, tripod, and flash unit.

*Please see pricing breakdown starting on page 11.*

c. Portrait backdrop.

*Not sold by ACRE.*

d. Fargo DTC5000 or equal badge printer with simultaneous dual sided, over-the-edge printing and printer cleaning kit.

*Please see pricing breakdown starting on page 11.*

e. Printer materials to print 2,000 badges.

*Please see pricing breakdown starting on page 11.*

3. Software and licenses to support the anticipated facility equipment as indicated in the attached Security System Quantities Summary. The summary indicates the types of facilities and the quantity of each, card readers, cameras, intrusion panels, and security equipment locations (where access control equipment will be located).

*Please see pricing breakdown starting on page 11.*

4. Total cost to implement the anticipated system. The total cost shall not include off-the-shelf hardware such as servers, workstation computers, monitors, and other equipment that can be purchased by the District, through typical technology contracts.

*Please see pricing breakdown starting on page 11.*

5. Unit prices to add software licenses and capacity after the initial purchase where different from proposed initial system prices (e.g., escalation, renewal, etc.).

*Access It! is licensed by number of intelligent controllers, this is a tiered license system. Based off the number of locations the district has and how many intelligent controllers will be needed at each school, we estimate the need for 30 intelligent controllers. This would put the districts license in the SL100 Tier. The district would be able to expand by 70 controllers before needing to upgrade the license. There are a list of one time addons for the server listed here:Badging, Biometrics, DataExchange, Encoding, Fargo printer integration, import/export, IP locks, mobile, notifications and more.*

6. Unit prices for each manufacturer-provided Mercury access control hardware element.

*LP1502- MSRP \$2,100.00*

*MR-52-S3B- MSRP \$1,171.00*

7. Unit prices for each hardware element necessary to implement the system that must be purchased from the manufacturer.

*The Mercury panels are the only necessary items to be purchased through ACRE, they have a specific OEM Code written to the firmware to operate with Access It!. These can be changed, but incur a charge when doing so.*

8. Unit prices for other hardware and equipment that can be purchased through the manufacturer (e.g., card readers, access cards, printers, etc.).

*ACRE offers a wide variety of card readers, card, printers and much more. For informational purposes the below is recommended due to current lead times and cost.*

*Readers:*

*WL-ET20-6WS MSRP \$378*

*Credentials:*

*ACT ID Mobile Credential Free*

*WL-50h4 MSRP \$6.75*

#### **1.04 Integrators**

- A. The number and quality of integrators that can support the manufacturer's product for the District will be evaluated.

*ACRE has many integrators throughout the U.S. ACRE has implemented a tiered system in which the top performing integrators receive better pricing as well as more training from the manufacturer. In southern California alone we have 2 Diamond level integrators and 4 Platinum level dealers for ACRE and Access It!*

- B. Submit a list of certified integrators that can provide services and support to the District. Include contact information and address for each.

*Please see list starting on page 16.*

#### **1.05 Support to the District**

- A. Direct manufacturer support is essential to the District. The District will train and certify their personnel who will service and support the security system.

*Direct support is offered to certified trained end users who are currently on a DSA.*

- B. Submit proposed manufacturer pricing to support the District's maintenance staff as follows.

1. Annual software support and maintenance agreement to provide direct support to the district. Provide costs for a minimum of five years.]

*One year direct support agreement for SL100-SOFT. Includes all version updates and upgrades. Platinum DSA also includes (4) Annual sessions with the Field Service Engineer (FSE). These sessions are to be scheduled directly with the FSE. One of the sessions will be onsite at a location agreed upon by the end user. \*Pricing could be subject to change based on non-normal travel accommodations or anything outside of the continental US. The purchase order must list the serial number of the qualifying licensing serial number. Before a Direct Support Agreement may be purchased, the end user must be running the latest version of Access It! Universal.NET MSRP Annual Cost: \$13,659.00*

2. Training and certification for installation and maintenance technicians.

*Please see pricing breakdown starting on page 11.*

3. Training and certification for system administrator and configurator staff.

*Please see pricing breakdown starting on page 11.*

4. Training and certification for system operators.

*Often this training is done by the system integrator, if manufacturer training is required, the Essentials course would be the option for operators as well. Certified Essentials training has an MSRP cost of \$800.00 per student.*

5. Include individual and group package pricing for each of these programs as applicable.

*Customized specific group training is offered, however the cost is built as needed.*

## **1.06 Video System Integration**

A. Include in the system narrative a detailed explanation of video system integration with access control and intrusion detection functions. Provide details for the following:

1. Integrated video system manufacturer.

*Milestone*

2. Relationship between the manufacturers.

*Top partner with Bi-Directional integration. Milestone software can be purchased through ACRE offering significant savings.*

3. Manufacturer roles and responsibilities including integration support.

*Subject matter experts will maintain support on their vertical, ACRE supports the integration of video into the PACs.*

4. Integrated user interface and system functions available through the integrated user interface.

*The Access Control integration between Milestone XProtect and many leading access control solutions is easy to use in the XProtect Smart Client User Interface. XProtect integrates with ACRE products (Open Options, RS2, Feenics). Unlike other Video Management solutions that steer customers to their own proprietary access control solution, Milestone provides customers the freedom of choice, and with so many ACAM integrations, customers are not married to a single manufacturer should they want to migrate to a different ACAM in the future.*

*The bi-directional integrations with Milestone's Access Control Technology partners allows NMUSD operators to display access control and alarms in a separate tab with associated video in the XProtect Smart Client. Also, operators can utilize standard XProtect video search, export, and review functionality.*

*XProtect operators can use XProtect Map functions to display doors status on a graphical map, as well as lock and unlock doors. By using Milestone VMS as the viewing client, operators may also manage other third-party applications in the same user interface such as intercoms, people counting, heat mapping, loitering and other types of video analytics. These applications are installed separately.*

B. Provide software, licenses, professional services, and other costs necessary to implement the video system integration.

*Please see pricing above starting on page 11.*

### **1.07 Video Analytics**

A. Include in the system narrative a detailed explanation of video analytics supported by the system. Provide details for the following:

*Please refer to VMS Partner response for this section.*

1. Video analytics integrated into the video surveillance system.
2. Partner manufacturers providing video analytics.
3. Key video analytics provided through partner manufacturers.
4. Operational differences of partner manufacturers versus integrated video analytics.
5. Integration of partner manufacturer video analytics into the user interface.

B. Included in the itemized pricing a detailed unit price list for video analytics. Include the following:

1. Integrated video analytics licenses and licensing scheme.
2. Primary partner video analytics licenses and licensing scheme.
3. Optionally, provide secondary partner video analytics licenses and licensing schemes.

### **1.08 Intrusion Detection Integration**

A. Include in the system narrative a detailed explanation of intrusion detection system integration with access control and video surveillance functions. Provide details for the following:

1. Integrated intrusion detection system manufacturer.

*Both Bosch and DMP are supported.*

2. Relationship between the manufacturers.

*Both Bosch and DMP are supported on all ACRE product with a strong integration.*

3. Manufacturer roles and responsibilities including integration support.

*ACRE supports the integration, but not functionality of the intrusion system.*

4. Integrated user interface and system functions available through the integrated user interface.

*Use a single, consistent graphical interface for both the access control system and the intrusion detection system*

*Video playback on demand or tied to alarm/event time and data*

*Monitor intrusion events and alarms via the access control system*

*Execute access control system tasks based on intrusion events or alarms*

*Record alarm event data in the access control system events database*

*Control day-to-day intrusion detection system operations (arming/disarming zones, etc.) via Access It!®*

*Locate and review alarms through Access It!®'s Reports function*

B. Provide software, licenses, professional services, and other costs necessary to implement the intrusion detection system integration.

*S-BURG-DMP                      MSRP \$369 per panel*

*S-Burg-Bosch                      MSRP \$369 per panel*





## **Reference:**

### **San Diego State University:**

San Diego State University implemented Access It! as their access control standard. The system controls 1,229 card readers, over 20,000 card holders, a diverse VMS integration, Bosch intrusion integration, and are currently on a Platinum Direct Support Agreement. The university had also implemented a few of our custom integration like DAX Scheduling by Dietrios. They currently are licensed for an SL255 allowing up to 255 intelligent controllers on one server and are looking to grow. This system is used both for the faculty as well as student housing.

The University is open to discussing their system and experience but has not approved contact information to be made public on this proposal. If contact with the end user is desired, please reach out to Kyle Bruneault so that information can be provided privately.

[kylebruneault@acre-co.com](mailto:kylebruneault@acre-co.com)

Pacific Ridge School K-12

Campbell Hall

Granada Hills Charter School

College Station ISD

Cincinnati Public Schools

Humboldt State University

Chico USD

Nebraska University

University of Pittsburgh

If more information is required, please contact Kyle Bruneault [kylebruneault@acre-co.com](mailto:kylebruneault@acre-co.com).

## RS2 Technologies

### Access Control Solutions

# Software Solutions

## Software Solutions

The Access It!® line of software from RS2 Technologies is the industry's most advanced, easy-to-use access control software. To accommodate a wide range of applications, the software line ranges from Access It!® Lite.NET, an entry-level, single-user system, to Access It!® Universal.NET, a scalable system that can be expanded from single-building control into a multi-user, enterprise-wide system. Access It!® was designed from the ground up, with the end user in mind. By using the familiar Outlook® style interface for each version, the Access It!® line results in an operational access control system in minutes instead of hours. Frequently performed operations, such as image capture and adding cards, are changed into straightforward, step-by-step operations. With this simple concept, investments in user education are maintained throughout the life of the system, while streamlining system administration tasks.



## Software Features

Built around the trusted Mercury Security platform, the Access It! suite of software works with the most reliable and trusted hardware in the access control industry. Additionally, the Access It! suite of software works natively with multiple biometric and lockset hardware platforms. Moreover, numerous integrations, including Destination Dispatch, DVR/NVR, Intercom, pivCLASS, and visitor management provide the ability to create a solution for any environment, big or small, while still keeping the software simple to operate and use. The user interface is designed in logical manner making learning and using the software easy. Within the software suites, numerous software features are standard or optional including Badging, Data Import/Export, Data Exchange, E-mail Notification, Holiday Management, Maps, and a web client.



### Access It!® Lite.NET

Access It! Lite.NET is the entry-level tier of access control software. Access It! Lite.NET is free up to 8 doors and can be expanded to support a maximum of up to 64 doors. Access It! Lite.NET comes with a single client license but is expandable to an unlimited number of licenses. Client licenses are concurrent use licenses meaning each client license will allow for a single user to connect at a time. Access It! Lite.NET also has optional ID Badging, Data Import/Export, and web client. The Access It! Lite.NET software is bundled with the First Step hardware bundles for simplified purchasing and deployment. Access It! Lite.NET supports the LP-1501, LP-1502, and LP-2500 controller boards as well as the MR-50-S3, MR-52-S3, MR-16IN-S3, and MR-16OUT-S3 subpanels. Access It! Lite.NET provides a cost-efficient platform for access control and is simple to learn and use.

### Access It!® NEt Step

The NEt Step is a self-contained network appliance built with simplicity in mind. The NEt Step comes in two configurations, 2-door or 4-door. Both configurations are expandable up to 64 door configurations. The NEt Step appliance comes with everything needed to operate a small access control system. The NEt Step includes an NCL metal enclosure, power supply/transformer, a solid state network appliance pre-loaded with the NEt Step access control software, an LP-1502 controller, and an optional MR-52-S3. The NEt Step is simple to setup. Simply connect the device to the network and set the IP address. Once completed the device is online and ready to be programmed. The software also has options for ID Badging and Data Import/Export. The NEt Step unit is a popular choice due to its inexpensive nature, ease of deployment and maintenance, and straightforward software.

### Access It!® Universal.NET

Access It! Universal.NET is an Access Management Solution for Any Size Business! Whether you need simple access control for a few employees in a single building, or a variety of operations for thousands of employees in a multi-region system, Access It! Universal.NET is designed to meet your needs. This powerful, user-friendly software allows you to select the feature sets you need to build a scalable, cost-effective system. Access It! Universal.NET is available in both Standard and Enterprise versions. The Access It! Universal.NET software integrates seamlessly to diverse set of devices and contains logic to build tasks and macros for building automation. Access It! Universal.NET is built with safety, security, and scalability in mind to deliver the most complete access control solution.



RS2 Technologies, LLC • 400 Fisher Street, Suite G • Munster, IN 46321 • 877.682.3532

## An Integrated Access Control & Intrusion Detection System

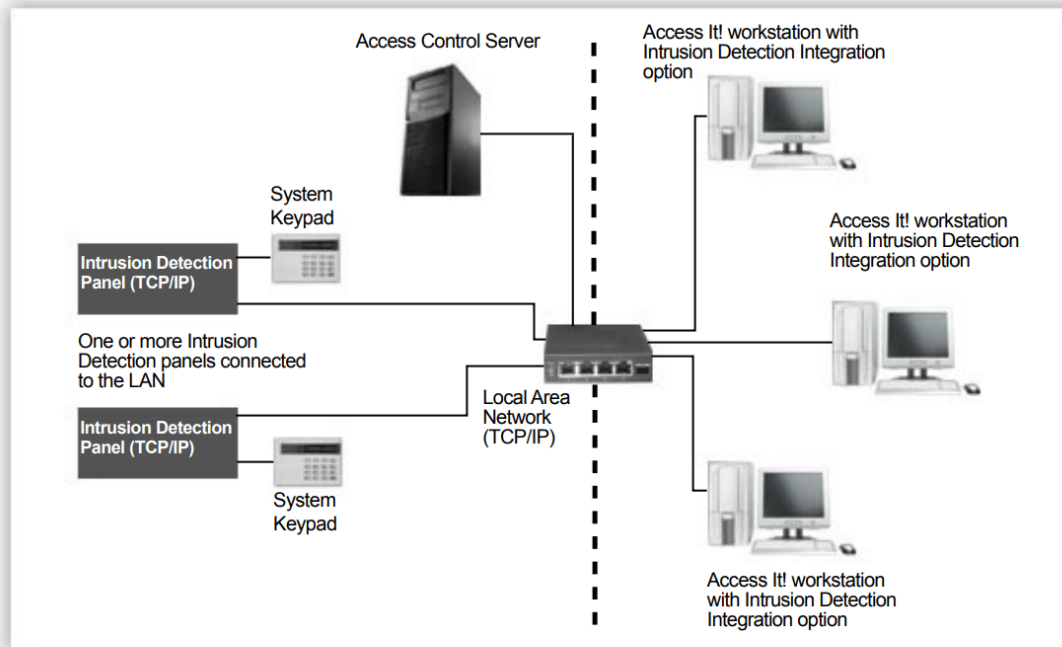


Figure 1: This diagram shows the network setup for an RS2 Access Control System that has been integrated with an intrusion detection system.

## A Completely Integrated Security System

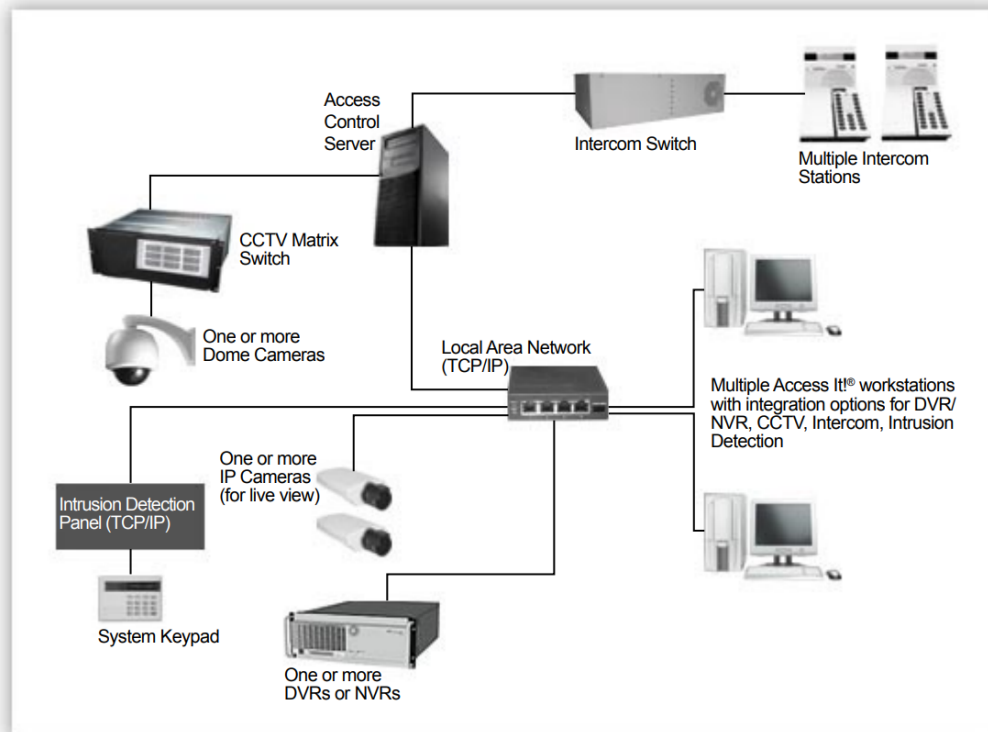


Figure 2: This diagram shows the network setup for an RS2 Access Control System that has been integrated with video surveillance, intercom, CCTV, and intrusion detection systems.