

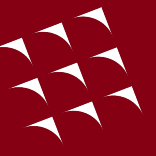


Estancia High School Theater

Board Update – December 13, 2022



Project Overview & Scope



Newport-Mesa
Unified School District

Project Scope Remains Nearly Identical to Prior Design

- Slight changes in the project's site elements
 - New hardscape, landscape and drop-off proposed
- 350 Seat Theater
- Black Box
- Lobby, Box Office, Front of House Support Spaces
- Support Spaces
 - Dressing Rooms
 - Scene Shop
 - Costume & Prop Storage



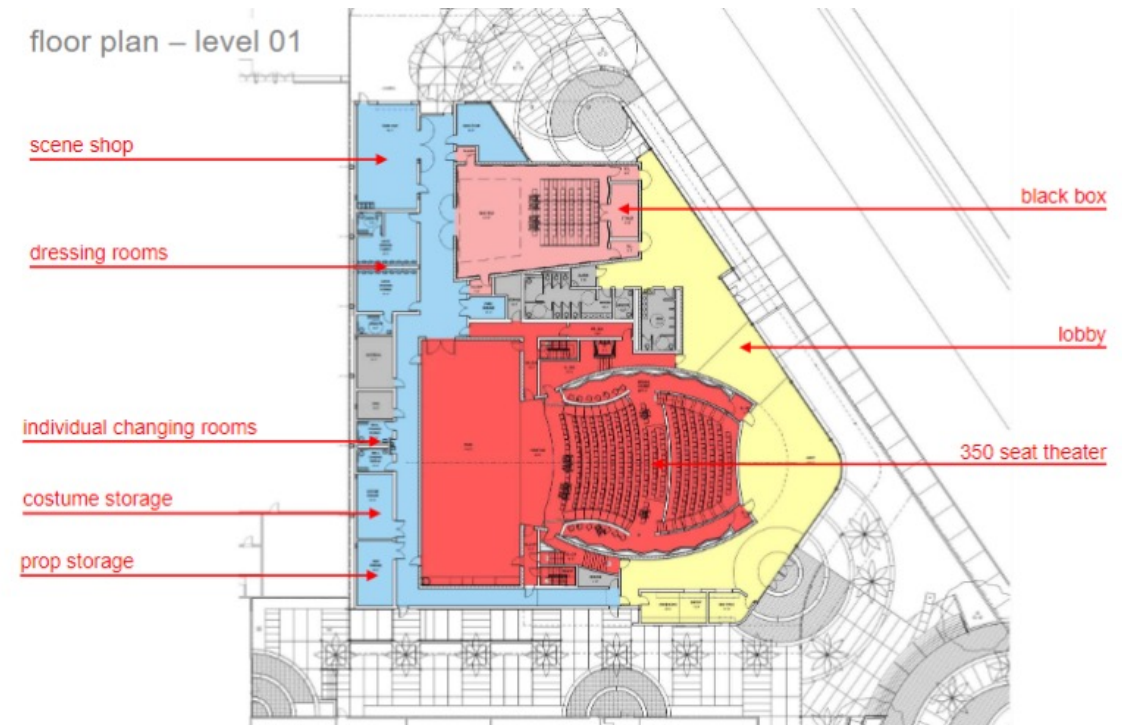
Project History



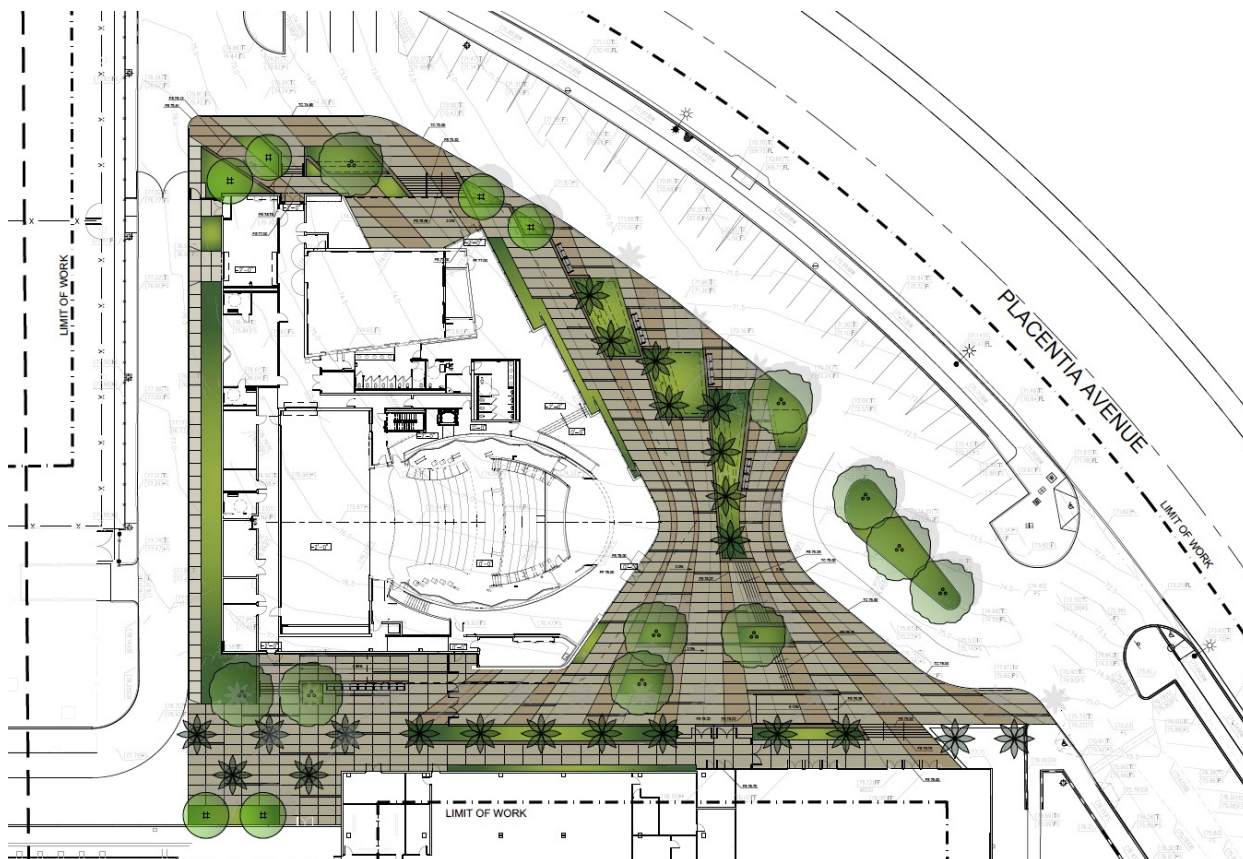
Newport-Mesa
Unified School District

Project Conception

- This project (among many others across NMUSD) promised as part of Measure F bond in 2005.
- Measure F GO Bonds issued in 2017.
- In 2018 the board authorized the district to proceed with an RFP for design of a new 350 seat theater, and an architect was selected in 2019.
- Original project design (situated in “Site 2”) was complete and approved by DSA in Late 2021.
- Initial design went out to bid, and contractor bids were received in February of 2022.
- Shortly after, District and Board began process to reevaluate theater site location.
- Held a community meeting in April of 2022 to review pros and cons of many site options of possible theater relocation.
- Board directed staff to begin process to relocate theater to “Site 3” on July 12, 2022, board meeting.



Preliminary Site Plan of Theater “Location 3”



- New additional vehicular drop-off location proposed west of theater.
- Designers working to maintain as much parking as possible.
- Some building elements will require minor redesign, but the building's intent and design language are maintained from earlier designs.
- New landscape elements are proposed across the entire site.

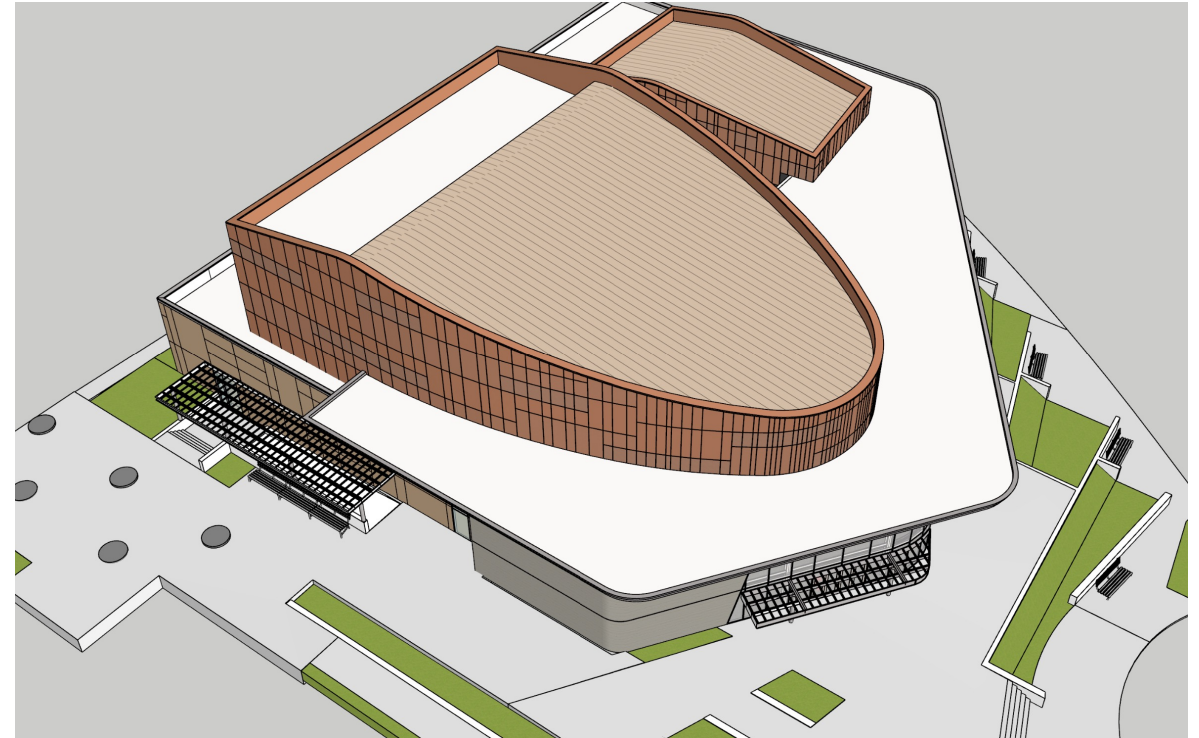


New Site Location



Newport-Mesa
Unified School District

Preliminary Revised Site Renderings



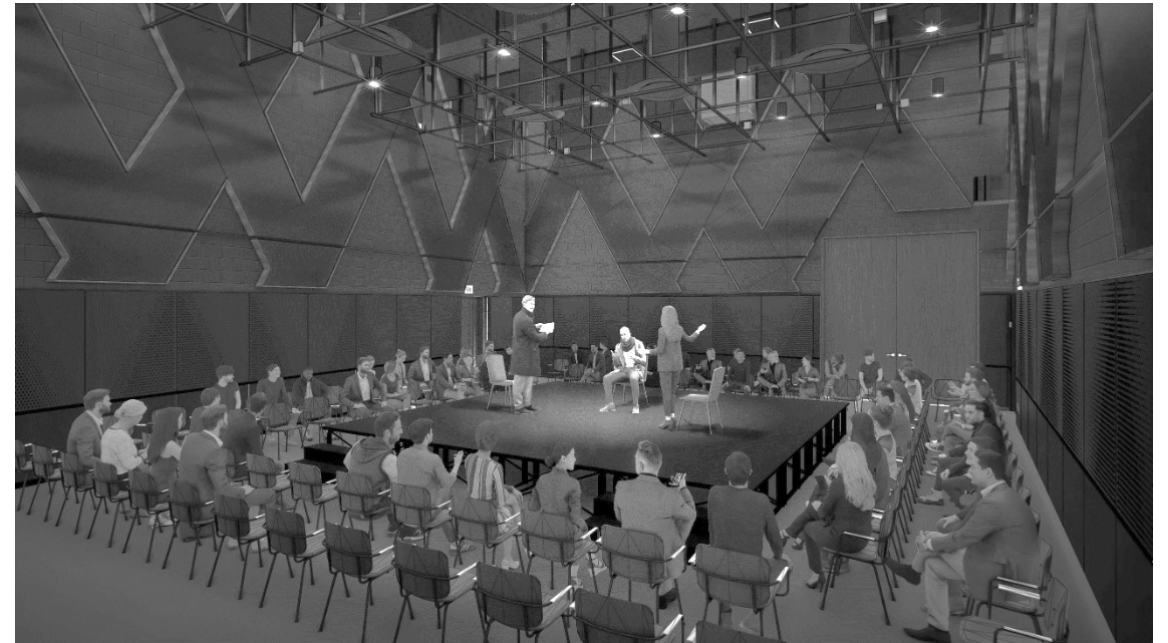


New Site Location



Newport-Mesa
Unified School District

Early Performance Space Renderings





Project History

Redesign+ReBid Timeline



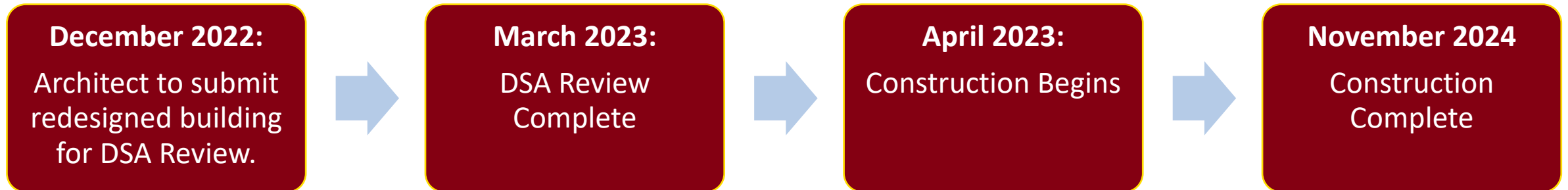


Project History



Newport-Mesa
Unified School District

DSA Review + Construction Timeline



An aerial satellite view of a school campus. In the upper left, there is a large red running track with a green field in the center, labeled 'Jim Scott Stadium'. To its right is a building with a red roof and several green tennis courts. Below the stadium are several baseball fields. In the center, a large white building is labeled 'Estancia High School'. To the right of the school is a parking lot and a road. The background is mostly green grass and trees.

Thank You!